



## Interfacing with CADWorx

**Michael Conaway**  
**Industry Solutions Manager**  
**Plant Design Solutions**

# CADWorx to Caesar II and Back



Unfortunately the barriers between design and analysis departments are both physical and mental. Consequently, information exchange between departments is prone to error or loss, and delays and expensive retrofits can be the result of relevant information not propagated to all stakeholders. We will reveal how the stress engineers can save on input time and concentrate on their primary task of solving stress problems by extracting the piping layout directly from the plant model, and do so with full confidence.

# CADWorx to Caesar II and Back



## **CADWorx Plant Pro & CAESAR II**

**Bidirectional Workflow**

# PV Elite/PV Fabricator to/from Analysis and Design



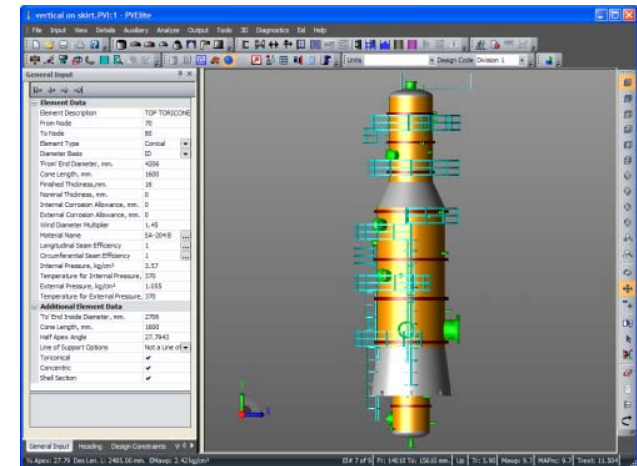
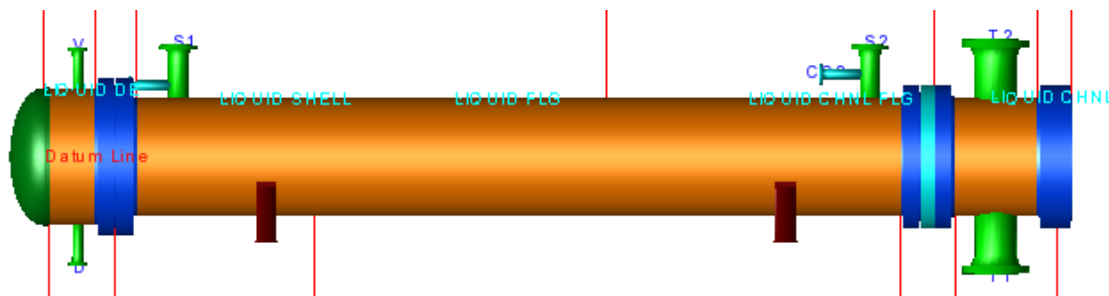
The intuitive bi-directional links between Intergraph CADWorx Equipment and PV Elite vessel analysis programs allow designers and engineers to seamlessly collaborate during the project design stage. Bring into the Engineering office the benefits of such integration and how to successfully complete fast-paced projects with minimal overhead.

# PV Elite/PV Fabricator to/from Analysis and Design



*PV Elite is a program that performs mechanical design/analysis of pressure vessels and heat exchangers per a number of international pressure vessel codes including:*

- ASME - American National Standard
- PD 5500 - British National Standard
- EN-13445 - European National Standard





# PV Elite/PV Fabricator to/from Analysis and Design



PV Fabricator has advanced tools for the accurate and speedy production of pressure vessel fabrication deliverables. When linked to PV Elite®, it greatly improves the workflow between engineer and designer to increase productivity and reduce the re-work and errors that cause costly overruns and penalties.

## Powerful Modeling Capabilities

Links to Intergraph PV Elite®

Links to Intergraph CADWorx

Fast and Accurate Fabrication Drawings

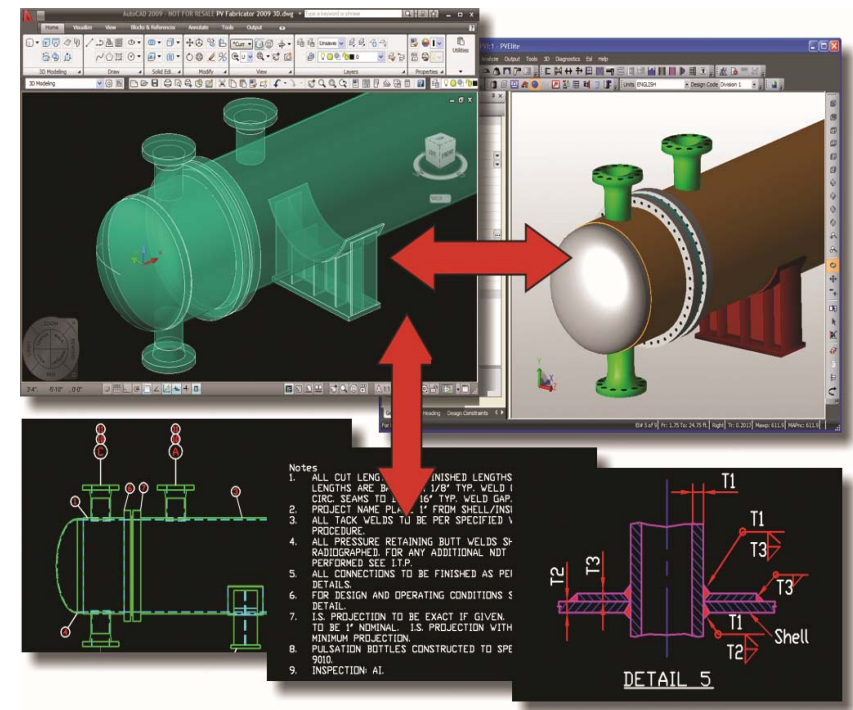
Uses Existing Blocks and Details

Block and Detail Updates from PV Elite®

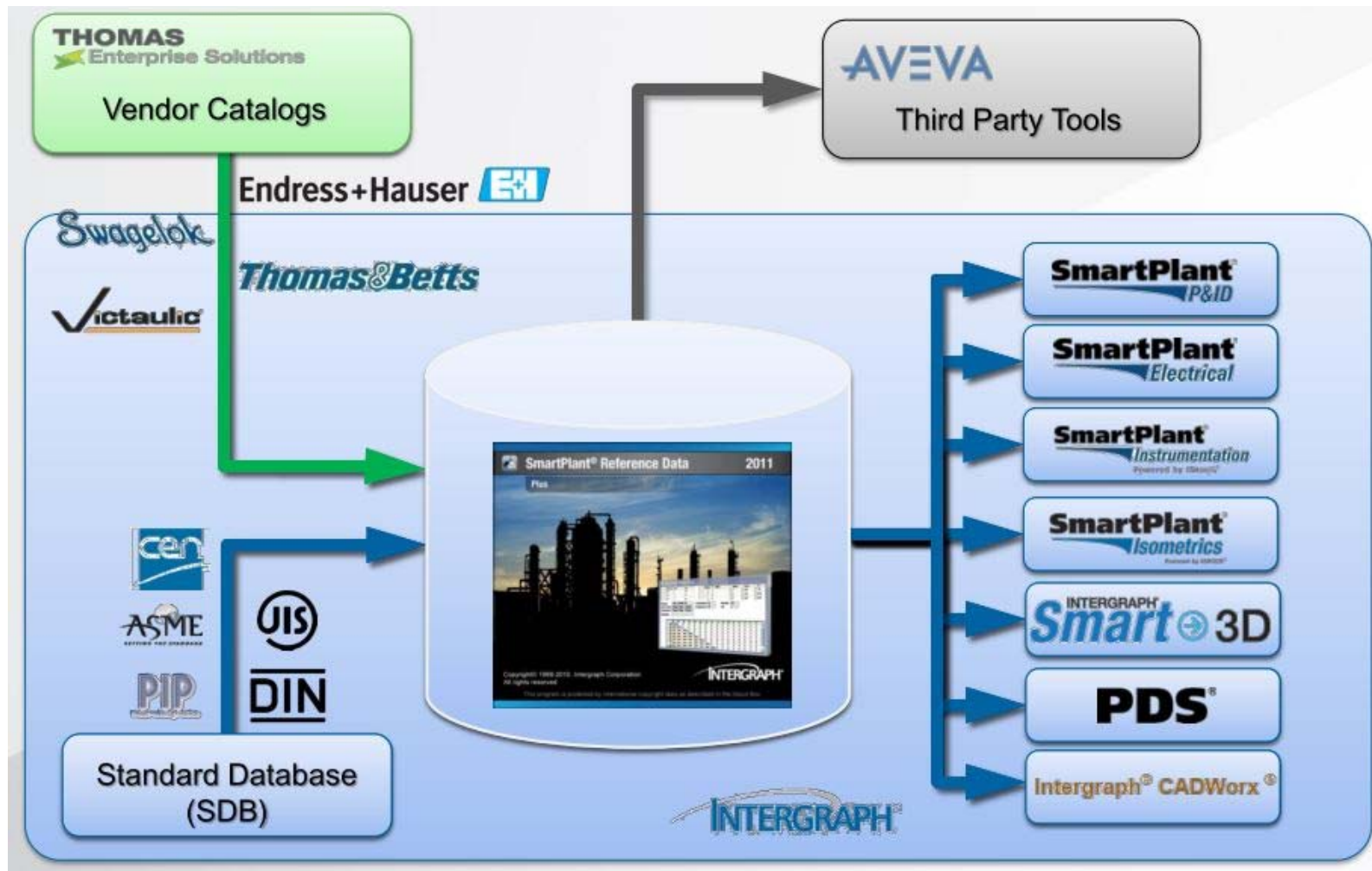
Ease of Customization

Intelligent Bills of Material

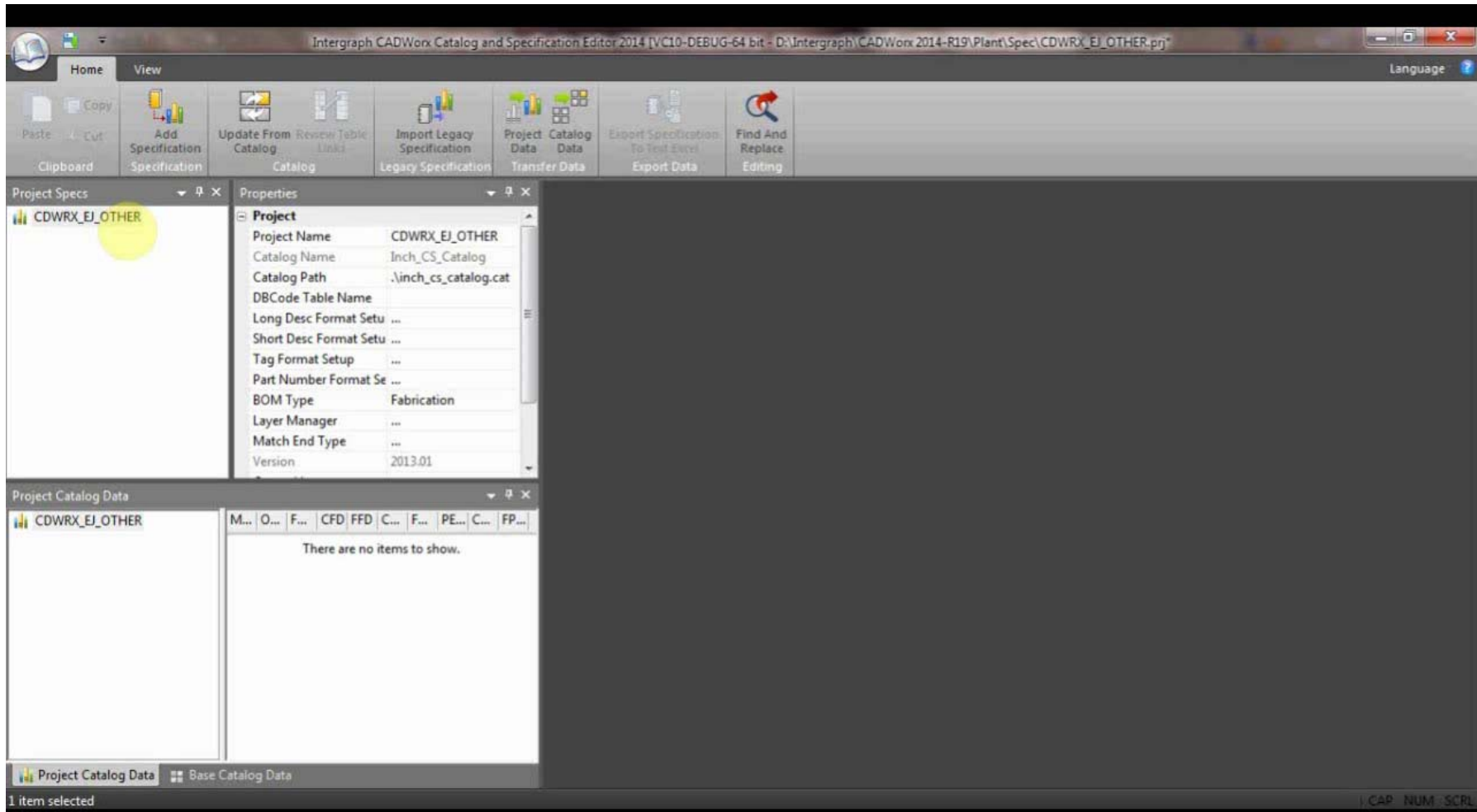
BOM Export



# Smart Plant Reference Data to CADWorx

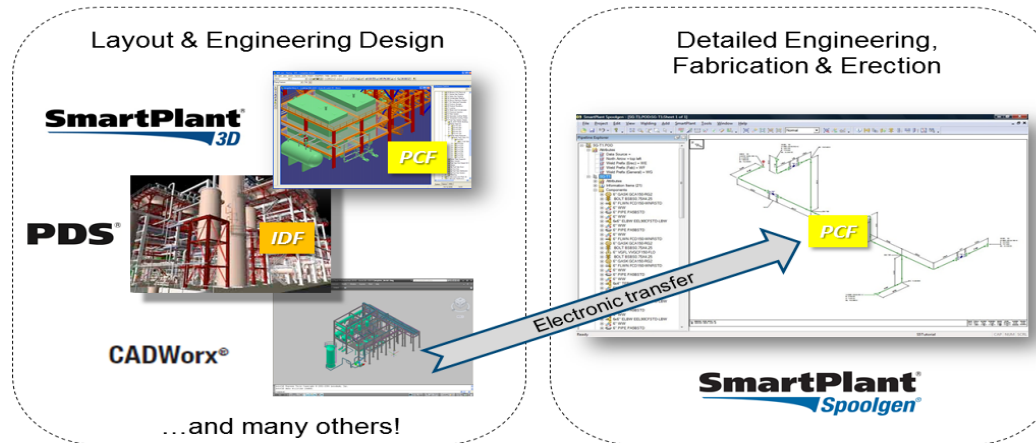


# Smart Plant Reference Data to CADWorx





# CADWorx and Spoolgen



**Benefits of electronic data transfer from CADWorx to SmartPlant Spoolgen being**

**No redrafting or re-entry of material data is necessary.**

**Design integrity and accuracy is maintained.**

**Work preparation lead-time for the workshop is reduced.**

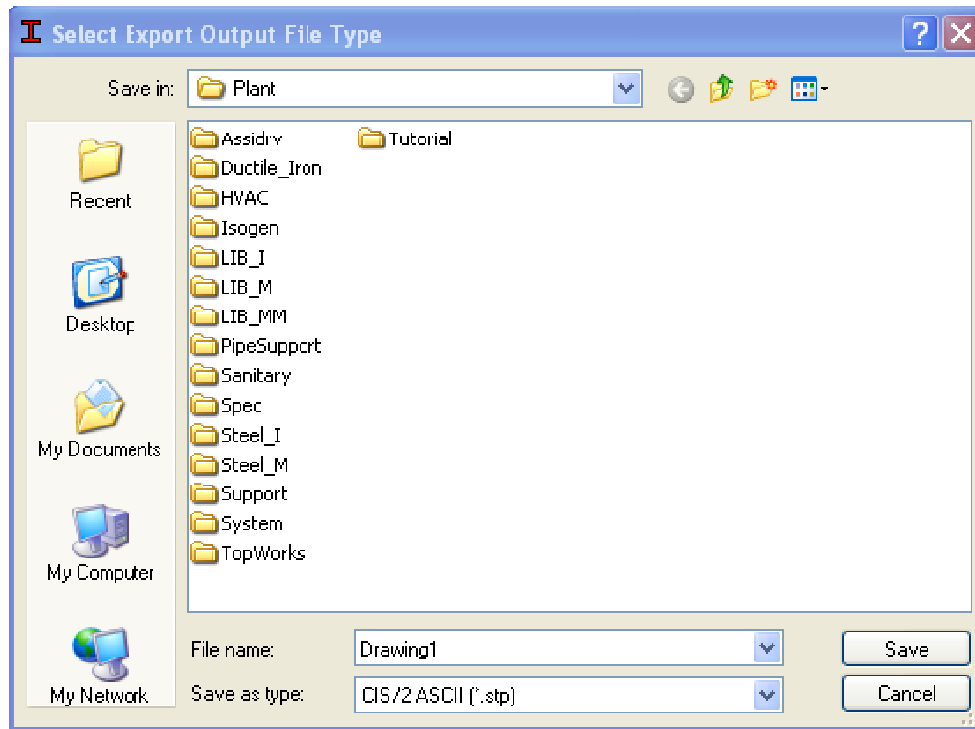
**Accurate bulk BOM generation possible, leading to more accurate procurement and improved delivery schedules.**

**Reduced fabrication project costs due to elimination of costly re-drafting effort, with drawings produced in minutes rather than hours.**

**Shortened schedule due to elimination of drafting and reduced manual data entry.**

**Increased quality due to reuse of the original CADWorx plant design model data.**

# Structural CIS/2ASCII Import Export



Exports selected CADWorx steel components to one of three data format: CIS/2, CAESAR II, or Robobat.

# CADWorx E & I with CADWorx P&ID



## STARTING SMART BY CONSUMING DIGITAL DATA



EXPERIENCE IMMEDIATE  
GAIN IN EFFICIENCY AND  
AVOID THE TIME  
CONSUMING TASK OF RE-  
ENTERING MASS DATA



INHERENT INCREASE IN  
ACCURACY BY IMPORTING  
DATA VS. THE ERROR  
PRONE TASK OF  
TRANSPOSING DATA



THE FIRST STEP IN  
ESTABLISHING A  
COLLABORATIVE  
ENGINEERING PROCESS

# Import Demonstration



## CADWorx E&I Solution

INTERFACE TO CADWORX P&ID - DATA IMPORT (WITH CADWORX E&I V2014)  
MOVIE



# Interfacing with CADWorx

---



## Questions?