



CADWorx Spec Editor Pipe Supports

Presented by:
Mark Bross
Kahuna Design

Overview



- Where are the pipe supports created?
- In the Spec Editor
- Inside your base Catalog
- For each PRJ



Inch_Catalog -PipeSupports.cat

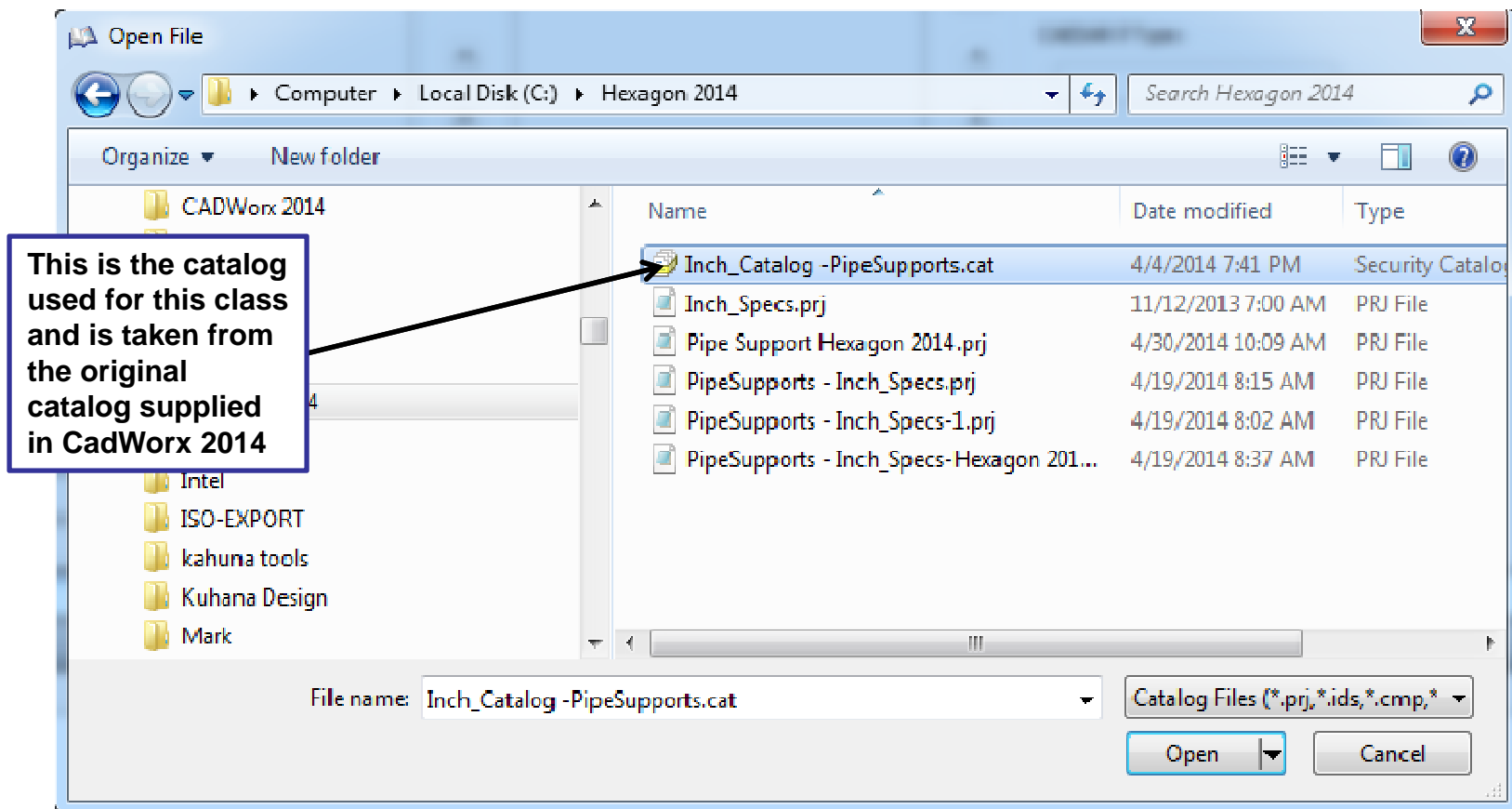


Pipe Support CAU 2014.prj



Setting up your modeler

- Open the base Catalog (**Inch_Catalog -PipeSupports.cat**)



Pipe Supports – What are you going to do?

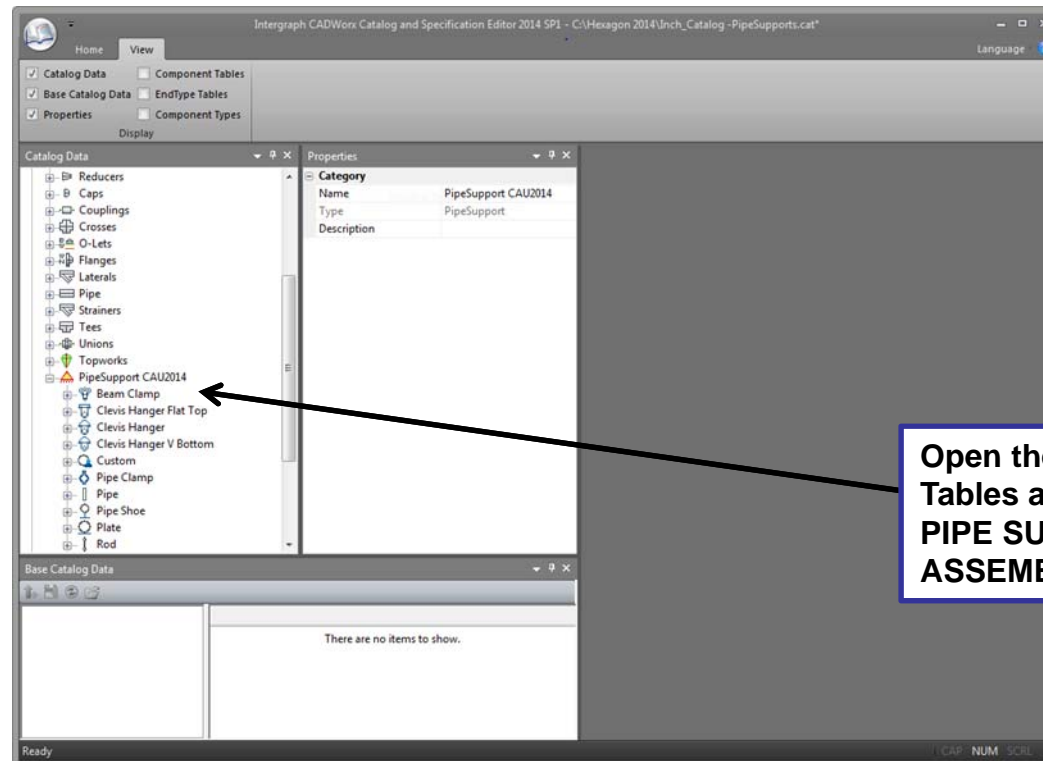


- Using existing supports out of the box
- Adding a new support
- Creating some custom supports



Open the Spec Editor

- Open the base Catalog
- Then open the “Catalog Data\ Data Tables\ Pipe Support Modeler”



Open the Data
Tables and the
PIPE SUPPORT
ASSEMBLY



Pipe Support Panel

- 1. Click the Home tab, and then click **Add Pipe Support Assembly** in the **Pipe Support** panel.
 - *The **New Pipe Support Assembly** dialog box displays.*
- 2. Type the name of the new assembly in the **Name** box.
- 3. Use the default catalog, or click the **Catalog** ellipsis for a new catalog. When the **Select Company Catalog File** dialog box displays, select a catalog, and then click **Open**.
- This catalog must contain a **PipeSupport** category for the pipe supports to function correctly. To add a pipe support category, see *Legacy Catalog Data Panel* (on page 40) or to build your own, see *Category Table* (on page 33).



Pipe support Assembly (cont.)

- 4. Click the **Size Table** list, and then select a size table.
 - This is the size table from the catalog you selected in the last step. If this catalog does not contain a size table you need to add one before you can add the new pipe support assembly.
- 5. Use the Available **Size** list to select or clear sizes.
- 6. Type your name in the **Created By** box.
- 7. Type a description of the assembly in the **Description** box.
- 8. Click **OK**.
- 9. Click **File > Save** to save the changes to the project.
 - *The new pipe support assembly displays under the project name in **Pipe Support Assembly***

Import Legacy Pipe Support Assembly



- 1. Click the **Home** tab, and then click **Import Legacy Pipe Support Assembly** on the **Pipe Support** panel.
 - *The **Import Pipe Support Assembly** dialog box displays.*
- 2. Click the **Assembly File** ellipsis.
 - *The **Open** dialog box displays.*
- 3. Select the pipe support specification for import, and then click **Open**.
 - Legacy pipe supports are contained in the programs **Spec** folder for 2013 and prior.
- 4. Check the **Catalog** and **Size Table**, and change if needed. These should be from the default base catalog.
 - If you want to use a different catalog, click the **Catalog** ellipsis, and then select a new catalog. Make sure that this catalog has a **PipeSupport** category for the pipe supports to function correctly.
- 5. Click **Import**. *The pipe supports are added to the **Pipe Support Assembly** pane under the project.*



Custom Pipe Supports

■ Adding in a Custom Support

- ☐ Open the Catalog where the pipe supports data tables are.
 - (PipeSupport CAU2014)
- ☐ Go to the custom data table.
- ☐ Click on “Add Data Table”
- ☐ Give it a name
- ☐ Add size table
- ☐ Add description
- ☐ Or Part number if required

The screenshot shows a 'New Data Table' dialog box with the following fields and values:

- Name: PipeClamp_EZ-Line
- Type: Custom
- Size Table: Size
- Start: (empty)
- End: (empty)
- Left: (empty)
- Right: (empty)
- Part Number: EZ-LINE
- Description: EZ-LINE pipe clamp modeled from catalog with each size as a un

Buttons: OK, Cancel, Help



Custom Pipe Supports (cont.)

- Add the drawing “Block Name” and path to the “DWGNAME” column
- Add individual part numbers if required

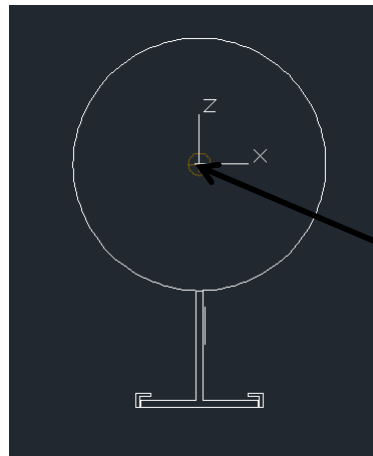
The screenshot shows the Intergraph CADWorx Catalog and Specification Editor interface. The main window displays a table for 'PipeClamp_EZ-Line' with columns: MAINSIZE, SUBDIRECTORY, DWGNAME, SCALE, LENGTH, WEIGHT, and USER_PART_NUM... The table contains data for sizes from 6.0000 to 24.0000. A callout box with the text 'Make sure you put in the correct drawing name and path' points to the DWGNAME column. The left pane shows a tree view of the catalog structure, including 'PipeSupport CAU2014' and 'Custom' items. The bottom pane shows 'Base Catalog Data' with the message 'There are no items to show.'

MAINSIZE	SUBDIRECTORY	DWGNAME	SCALE	LENGTH	WEIGHT	USER_PART_NUM...
6.0000			0	0	0	
8.0000			0	0	0	
10.0000			0	0	0	
12.0000			0	0	0	
14.0000			0	0	0	
16.0000			0	0	0	
18.0000			0	0	0	
20.0000			0	0	0	
22.0000			0	0	0	
24.0000			0	0	0	



Custom Pipe Supports (cont.)

- Always make sure that you have the right path to your blocks
- And make sure our blocks are inserted at 0,0,0



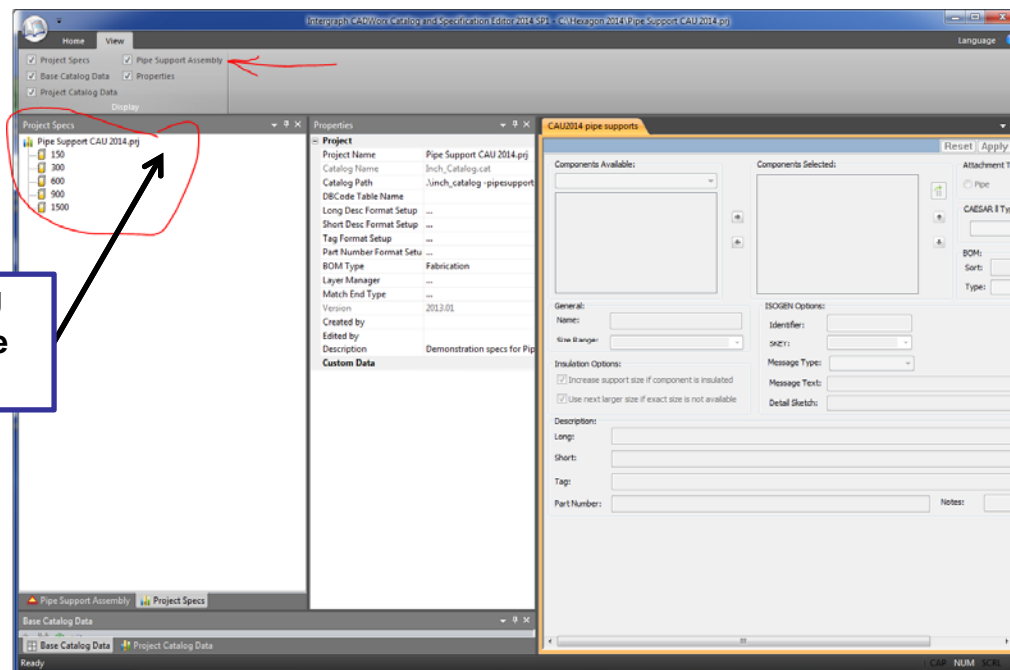
Make sure your
block insertion
point is at 0,0,0



Adding & Using Supports

- Now you are ready to add to your specifications
- Open the Spec Editor and the Spec .PRJ file

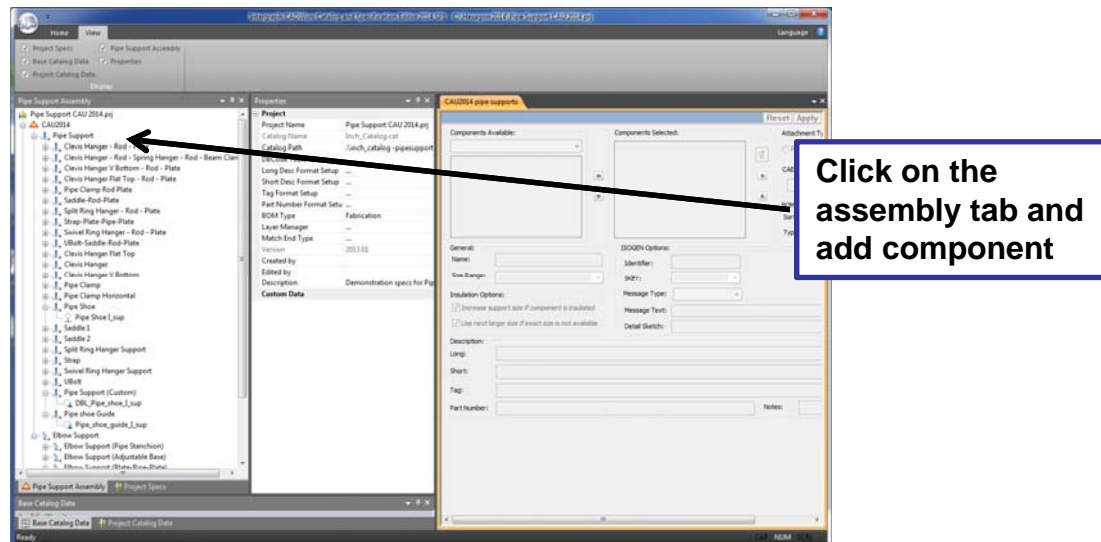
Get into the PRJ file and open the Pipe support



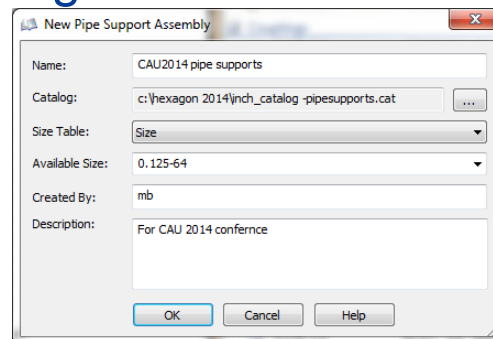


Adding & Using in the spec

- Add new pipe support Assembly



- Make sure you give it a name





Adding & Using in the spec

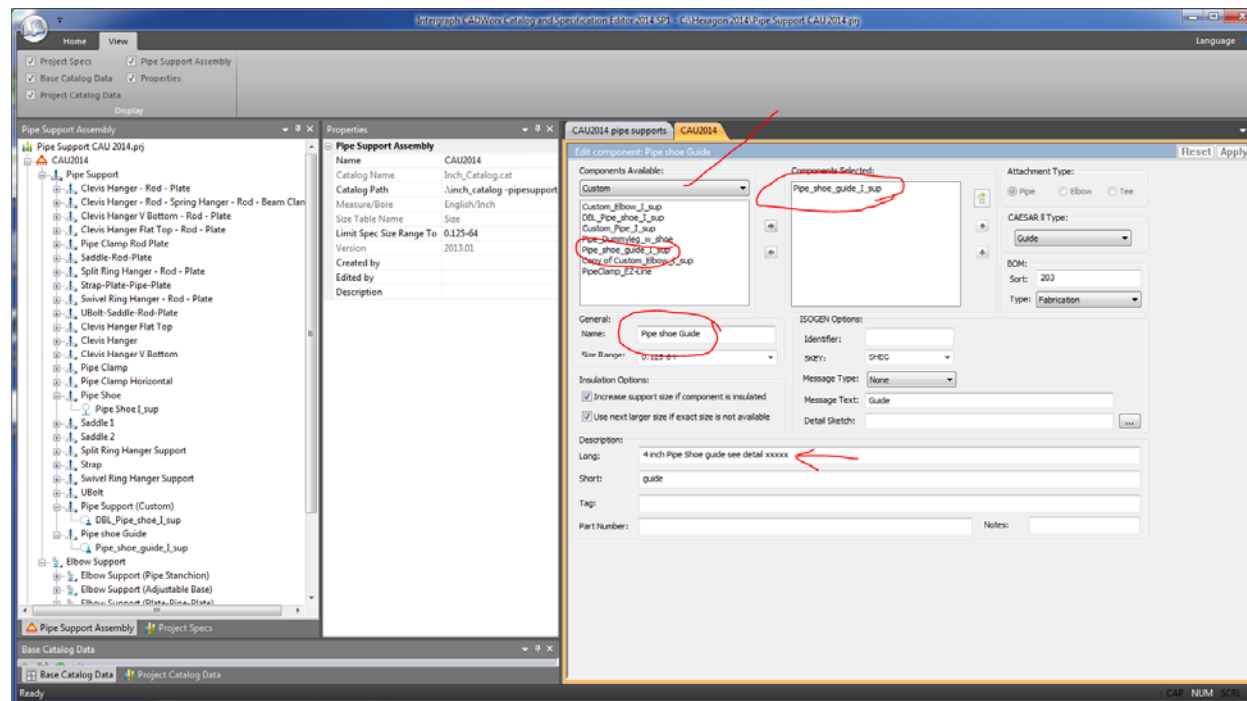
■ Add new pipe support Assembly

Add the custom component then fill out the info and don't forget to hit the ADD to complete



Adding & Using in the spec

- Fill out the information you want to see on your support



Finally lets test it.



- Go to your Piping models and test your support.
- Here we will test on a simple drawing.



Wish List

- More customizable assemblies
 - ☐ Dummy leg with pipe shoes
 - ☐ Double pipe shoes
 - ☐ Other types
- Ability to have the pipe shoes trim with a sloped pipe

Questions



- Ask them now.