



# CADWorx Plant Professional #2807: Who knew configuring ISOGEN could be fun! See how using the new ISOGEN Configuration

Introducing the new way to configure ISOGEN  
May 30, 2014

© 2014 Intergraph Corporation. All rights reserved. Intergraph is part of **Hexagon**. Intergraph and the Intergraph logo are registered trademarks of Intergraph Corp. or its subsidiaries in the United States and in other countries. Other brands and product names are trademarks of their respective owners.

The content of this document is proprietary work of Intergraph Corporation, or relevant third parties, and is protected by copyright law and international treaty. Any use, duplication, distribution or disclosure of such, other than as specified herein, is unauthorized and in violation of applicable copyright law and international treaty. All rights in content or materials bearing copyright notice or other attribution of third party rights are reserved to the relevant third party. United States Government license rights are limited to those mandatory rights identified in DFARS 252.227-7015(b).

Intergraph may make improvements and/or changes in the products and/or the programs described in this publication at any time without notice.

Any content or materials supplied hereunder are provided "as is," without warranty of any kind, either expressed or implied, including, but not limited to, any implied warranties of merchantability, fitness for a particular purpose, or against infringement. In no event shall Intergraph be liable for any damages arising out of, or in connection with the downloading, viewing, use, duplication, distribution or disclosure of any content or material published by Intergraph, including but not limited to any direct, indirect, incidental, special, punitive or consequential damages, or loss or corruption of data.

Some jurisdictions do not allow the exclusions or limitations set forth above, so the above may not apply to you. The exclusions or limitations shall apply in all jurisdictions to the maximum extent allowed by law.

Intergraph Corporation  
300 Intergraph Way  
Madison, AL 35758

Phone: +1.256.730.2000  
Toll Free USA: +1.800.345.4856  
Fax: +256.730.2048

# Contents

<b>Workshop.....</b>	<b>1</b>
Introduction .....	1
Objective .....	1
Outline .....	1
Assumptions .....	1
<b>Getting started.....</b>	<b>2</b>
<b>I-Configure basics .....</b>	<b>3</b>
Creating an isometric directory, project and isometric styles .....	3
<b>ISOGEN Configuration.....</b>	<b>6</b>
Explore the user interface.....	6
Home screen .....	6
Navigation: breadcrumb trail .....	8
Option group panel.....	8
Drawing Preview panel .....	11
Drawing Preview tools.....	12
Search .....	13
Drawing Setup Tool.....	14
<b>Editing isometric styles in ISOGEN Configuration.....</b>	<b>16</b>
Drawing Setup Wizard: Margin and Bill of Material .....	17
Instrument enclosure .....	19
Flange part number .....	21
Gasket display .....	23
Gasket dimensions .....	23
Dimension style .....	24
Weld numbers.....	25
Bend representation .....	26
Elevation co-ordinates at direction changes.....	27
Pipeline continuation message.....	28
Show equipment nozzle graphic.....	29
Equipment connection message .....	31
Material Control report.....	32

<b>Using the isometric style in CADWorx .....</b>	<b>36</b>
<b>Making changes to the isometric style.....</b>	<b>37</b>
<b>Appendix I: Upgrading from Project Manager to I-Configure.....</b>	<b>38</b>
Upgrading Project Manager (PipMan v2) projects and styles to I-Configure format for editing in ISOGEN Configuration .....	38
<b>Appendix II: Answers.....</b>	<b>39</b>

# Workshop

## Introduction

New ISOGEN Configuration simplifies the customization of piping isometric drawings and reports produced by ISOGEN. ISOGEN Configuration provides an intuitive, visual approach to setting isometric drawing style properties and provides easy access to ISOGEN's substantial array of controls and files. Pick graphically the options you want and immediately see the impact spontaneous style modifications have on drawing output using the built-in drawing previewer.

ISOGEN Configuration de-mystifies ISOGEN and unlocks its powerful capabilities in a user friendly way, making it easier for CADWorx users to set-up their project deliverables, and, do it faster! During this workshop you will learn this and see how this exciting addition to I-Configure makes configuring ISOGEN, more fun!

## Objective

The primary objective of this workshop is to introduce you to the new ISOGEN Configuration component of I-Configure.

## Outline

During this session you will learn how to

- Create isometric directories, projects and isometric styles in I-Configure
- Use many of the features of ISOGEN Configuration
- Edit an isometric style using ISOGEN Configuration
- Use the isometric style in CADWorx to produce ISOGEN output
- Make changes to the isometric style to change ISOGEN output
- Upgrade your Project Manager projects and style so that you may administer and customize them using I-Configure and ISOGEN Configuration

## Assumptions

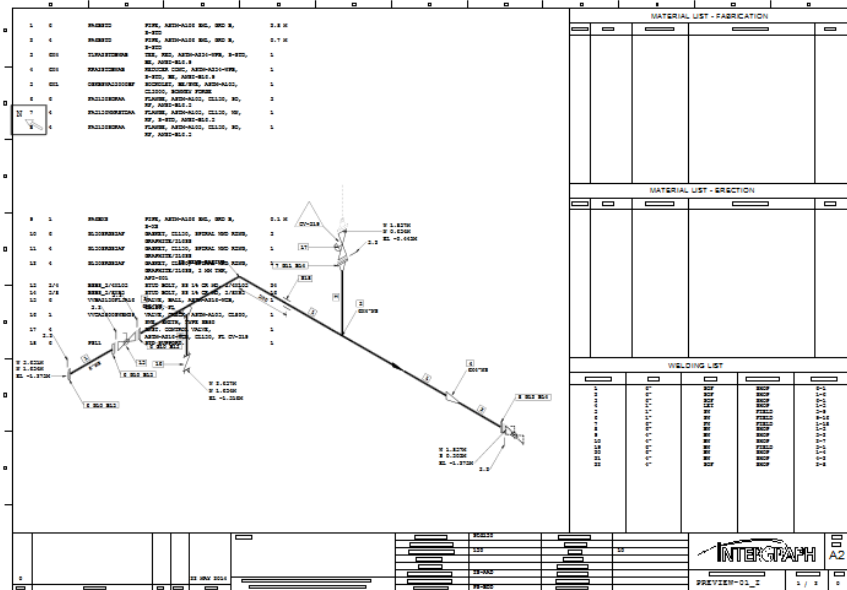
It is assumed that you will already know how to use I-Configure and CADWorx Plant Professional.

If not, the instructor is on-hand to assist you.

# Getting started

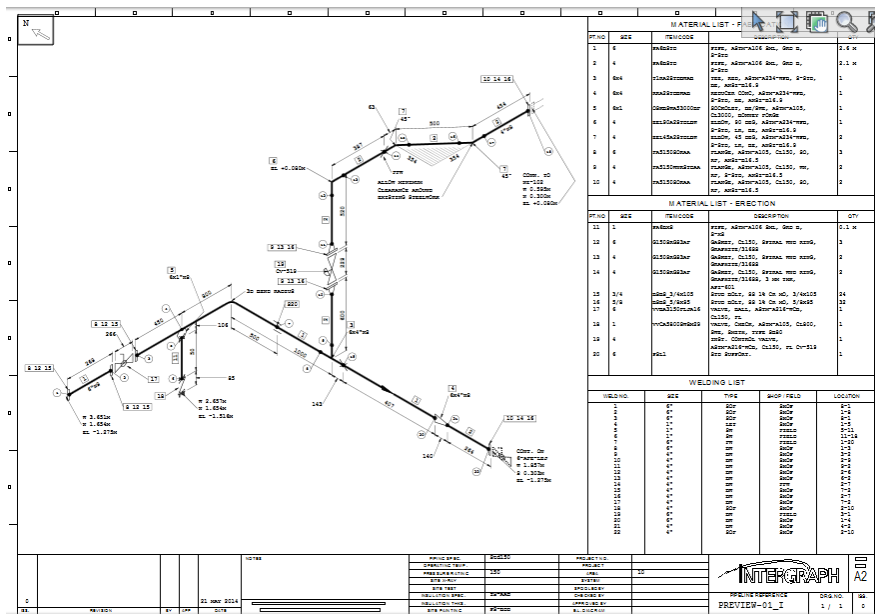
You're going to work with a copy of the Final-Weld-Box style, which, for the purposes of this workshop, has been purposely corrupted to be unusable for production of isometrics and reports via ISOGEN.

Corrupted state:



Your task is to re-configure the Final-Weld-Box style to make it production ready.

Finished state:



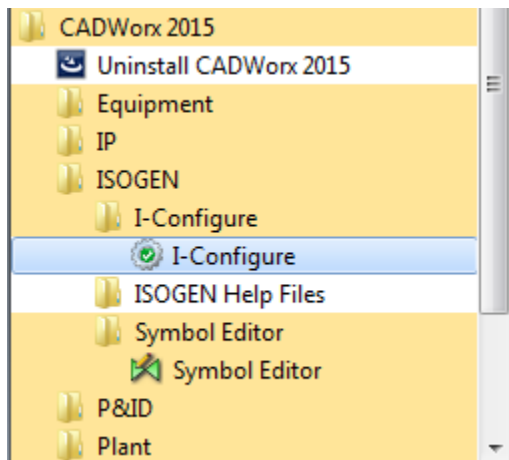
Let's get started!


## I-Configure basics

### Creating an isometric directory, project and isometric styles

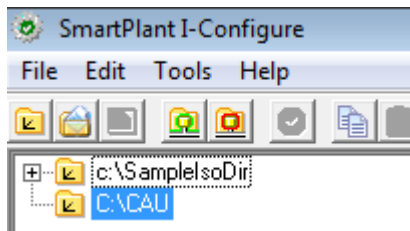
**Note.** If you already know how to use I-Configure, you can skip this section, it is optional.

Start I-Configure




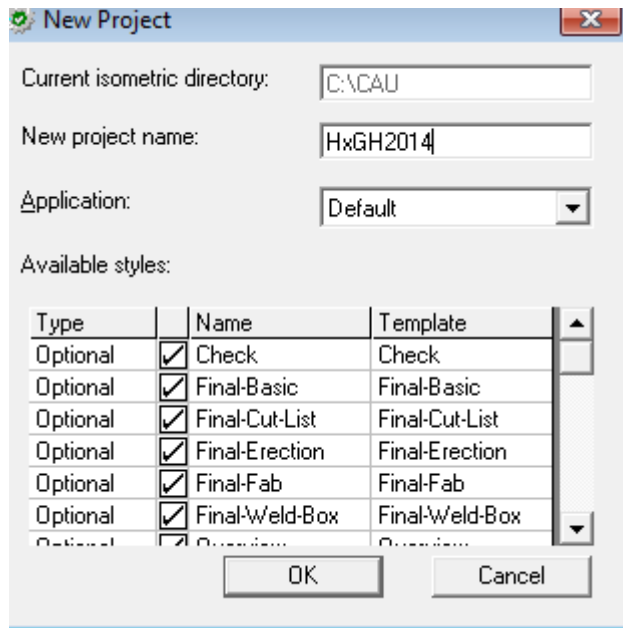
Click  to create a new isometric directory.

Click  to create a new folder on C:\, then enter CAU as the name, then click OK



Click OK.

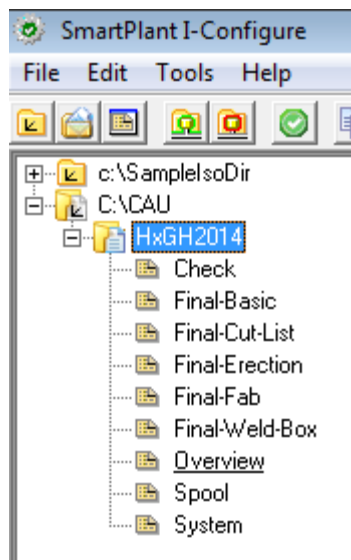
Click  to create a new project - the New Project dialogue appears



Enter HxGN2014 as the project name, leave all other settings as they are, then click OK.

Please be patient whilst I-Configure creates the isometric styles under the project.

Expand the tree to show

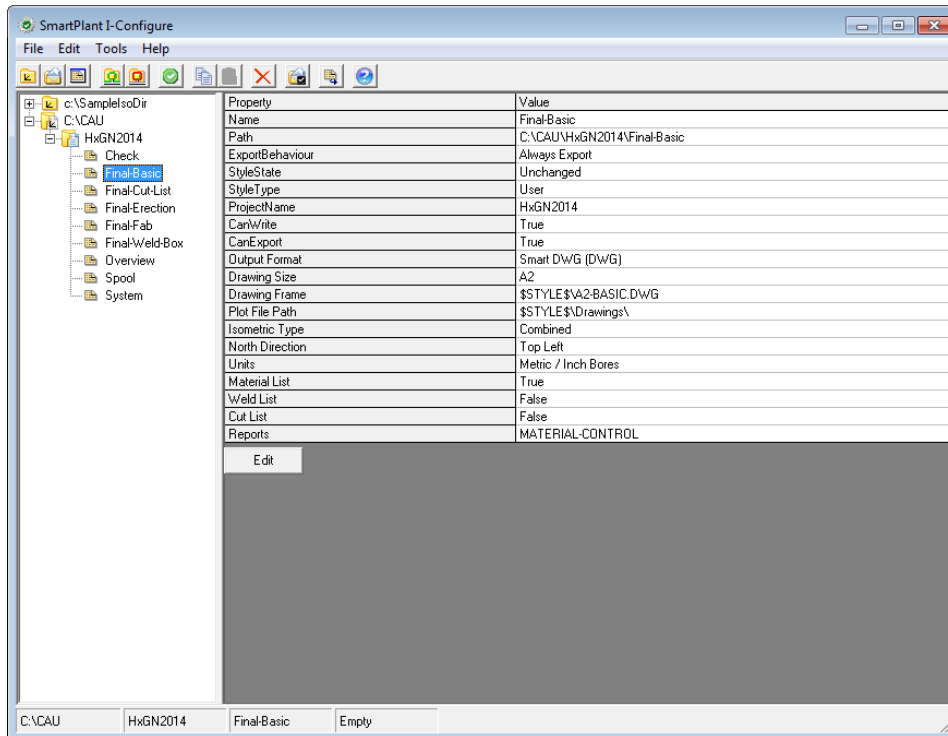



These templates provide a start point for administrators to develop company specific styles in accordance with company drawing standards or the deliverable requirements of a project. Custom styles once configured can be established as a company template and reused on future projects.

**Note.** To prevent unauthorized changes being made to styles by users, a password can be set at the project level if required.

Select the Final-Basic style in the list and the Properties panel on the right updates to show



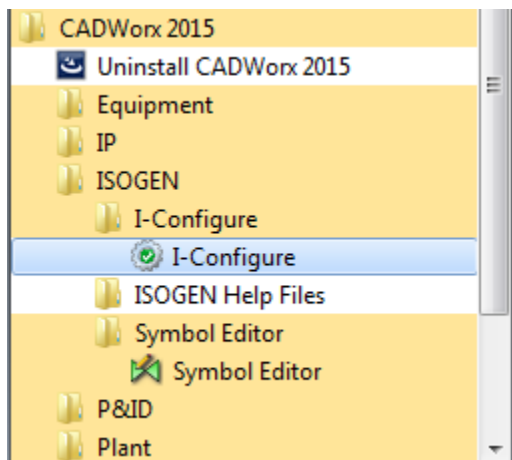


Using the LHB select the CAU entry in the tree, then click  to delete the isometric directory, and all of its contents.

**Note.** There is no undo in I-Configure, so this feature needs to be used with care!

## ISOGEN Configuration

If not already running, start I-Configure



If you're familiar with previous versions of I-Configure, supplied in the CADWorx 2013 and 2014 releases, you will probably notice that the Detail and Overview tabs are no longer part of the application.

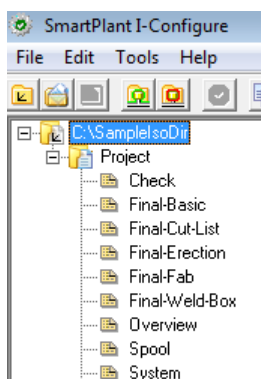
The function they performed is now handled by the new ISOGEN Configuration, which is accessed by this button




## Explore the user interface

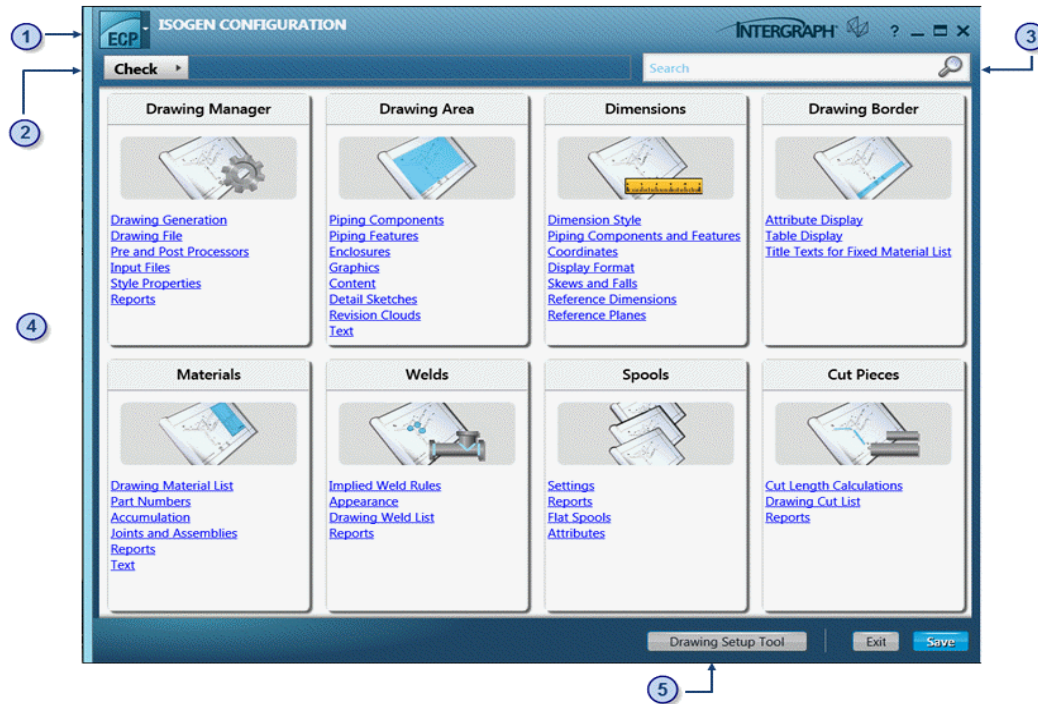
Home screen

Your system should already have this entry



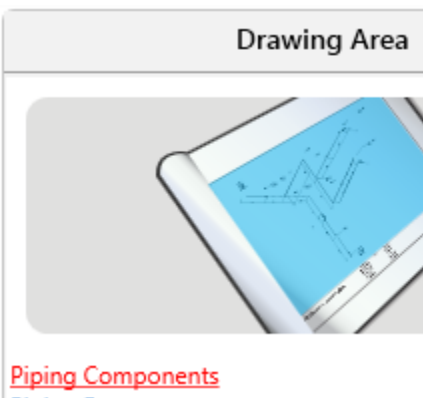
Select the Check style then click the  button

ISOGEN Configuration will start and you should see

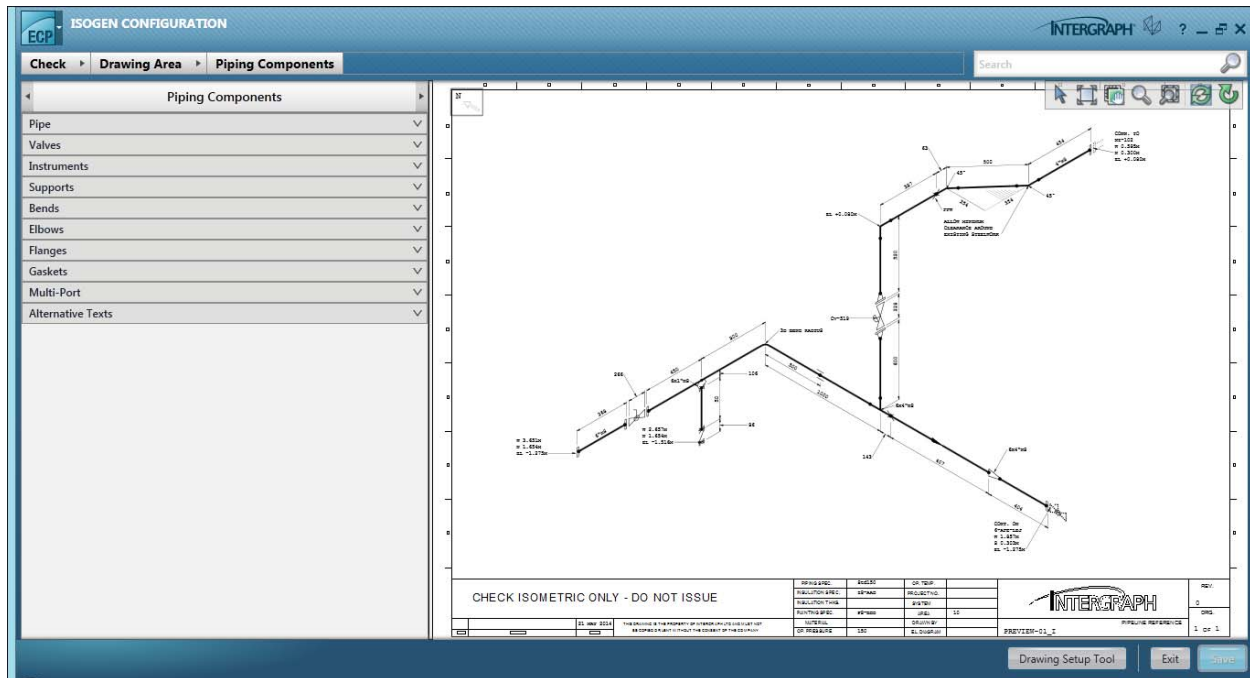


- (1) ISOGEN Configuration menu
- (2) Navigation bar
- (3) Search box
- (4) Category pane
- (5) Drawing Set-up Tool

Click on



The Configuration View appears



## Navigation: breadcrumb trail

ISOGEN Configuration organizes the hundreds of ISOGEN drawing controls using a hierarchical structure that consists of three levels of content: style category, style group, and option group.

This hierarchical structure breaks down the wide array of ISOGEN controls into manageable chunks of information. To help you keep track and know where you are within the hierarchy, ISOGEN Configuration uses a location-based breadcrumb navigation style. By providing a breadcrumb trail that illustrates how the hierarchy of ISOGEN drawing controls is structured, you can use one-click access to freely move through the hierarchy to configure drawing properties.

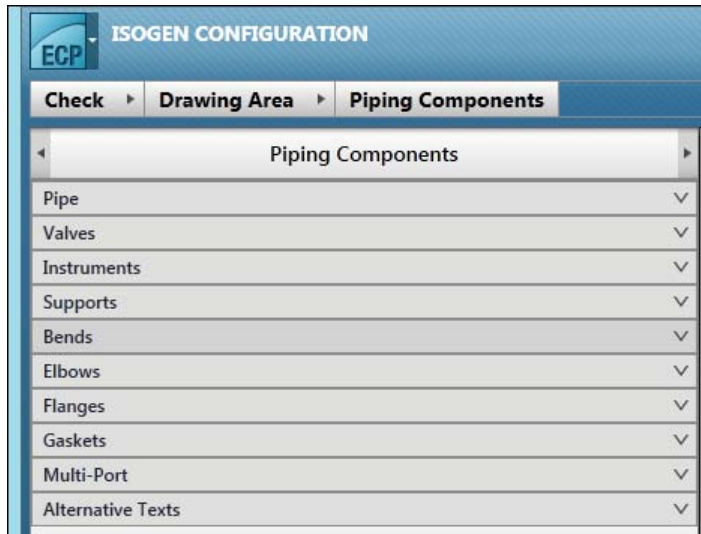



- Style - Check
- Style category – Drawing Area
- Style group – Piping Components
- Option group – the list of options displayed in the panel below the Style group


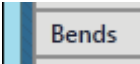
The breadcrumb trail indicates in which collection of drawing properties you are, and more importantly allows you to navigate your way through the product to find other collections of drawing properties. The breadcrumb trail starts with the name of the active style. After this, the active style category is listed, followed by the active style group.

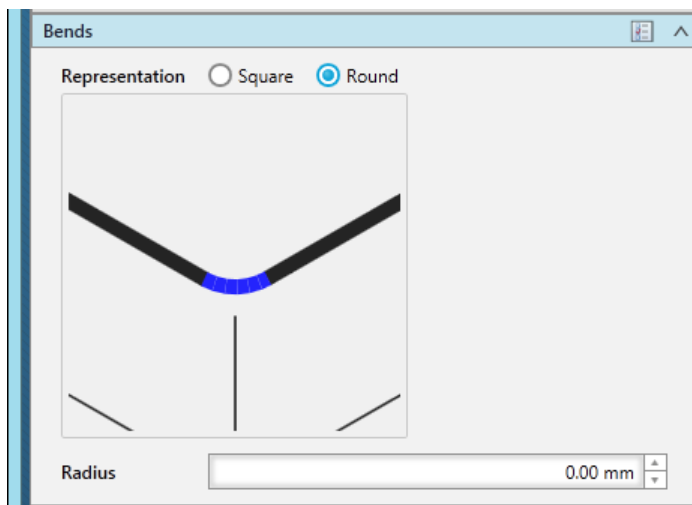
## Option group panel

Below the breadcrumb trail is the Option group panel



Clicking  expands the option group panel and displays all of its related isometric drawing style properties. You can modify any of these properties as needed. Some properties have a selection list from which you can select a value. Other properties require you to type a value or text string. Changing the value of each property ultimately determines the appearance of the isometric drawing and report file content produced during drawing generation.

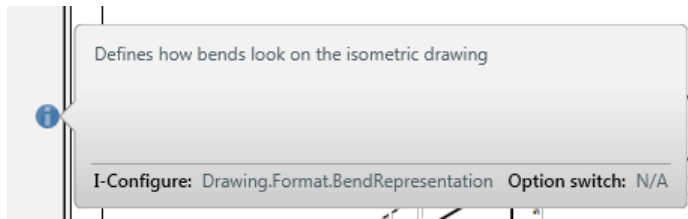
Click on  next to  to see the options that can be set



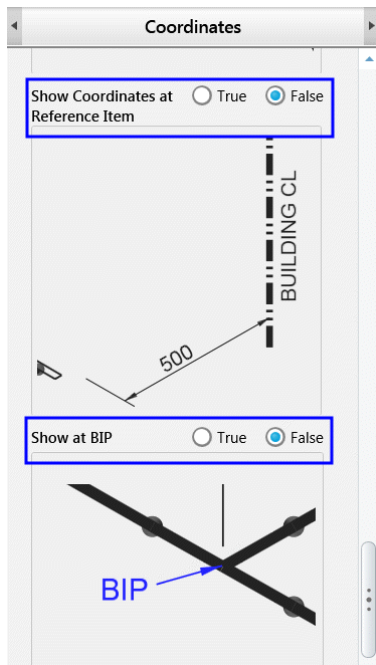
You'll notice as you move the cursor into the grey area that this icon appears



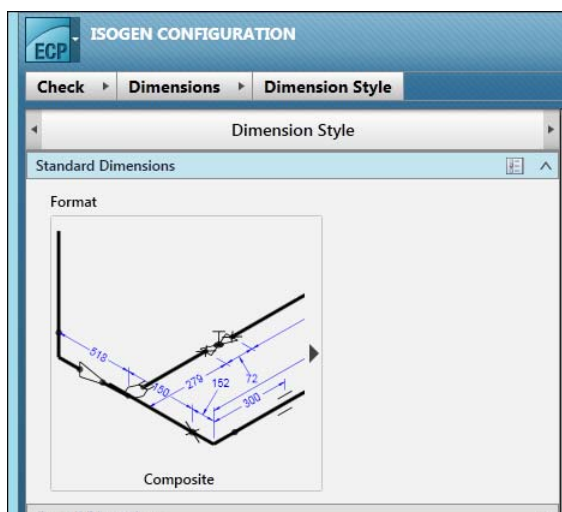
Place the cursor on top of the icon and an information pop-out appears explaining more about what the option does etc.



In the example below, changing the True/False settings control whether coordinates for reference items and break-in points are shown on the generated drawing.



Change the breadcrumb trail as shown



Notice the  next to the graphic.

**ISOGEN CONFIGURATION**

? — □ ×

Check
Dimensions
Dimension Style

Dimension Style

Standard Dimensions

Format

Overall Dimensions

Standouts

Dimension Location

Dual Units

Additional Allowance

Suppress Branch Dimensions

Vertical Dimensions

←
→

Composite

Basic

Combined Erec/Offsh - Composite

Support

Full String

Pipe Only

Reference Only

Combined Erec/Offsh - Basic

Other: 60  
W: 1.50in  
H: 1.50in  
W: 1.50in  
H: 1.50in

Other: 60  
W: 1.50in  
H: 1.50in  
W: 1.50in  
H: 1.50in

INTERGRAPH

ISOGEN-03\_1

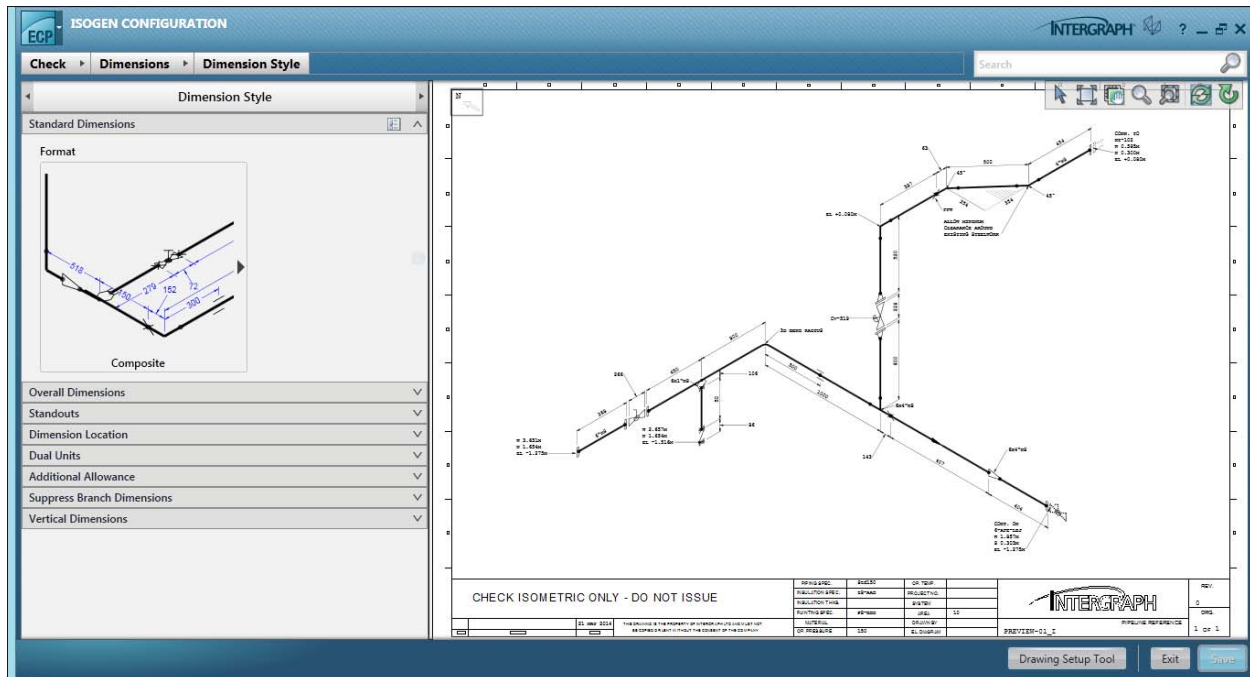
1 of 1

Drawing Setup Tool

Exit

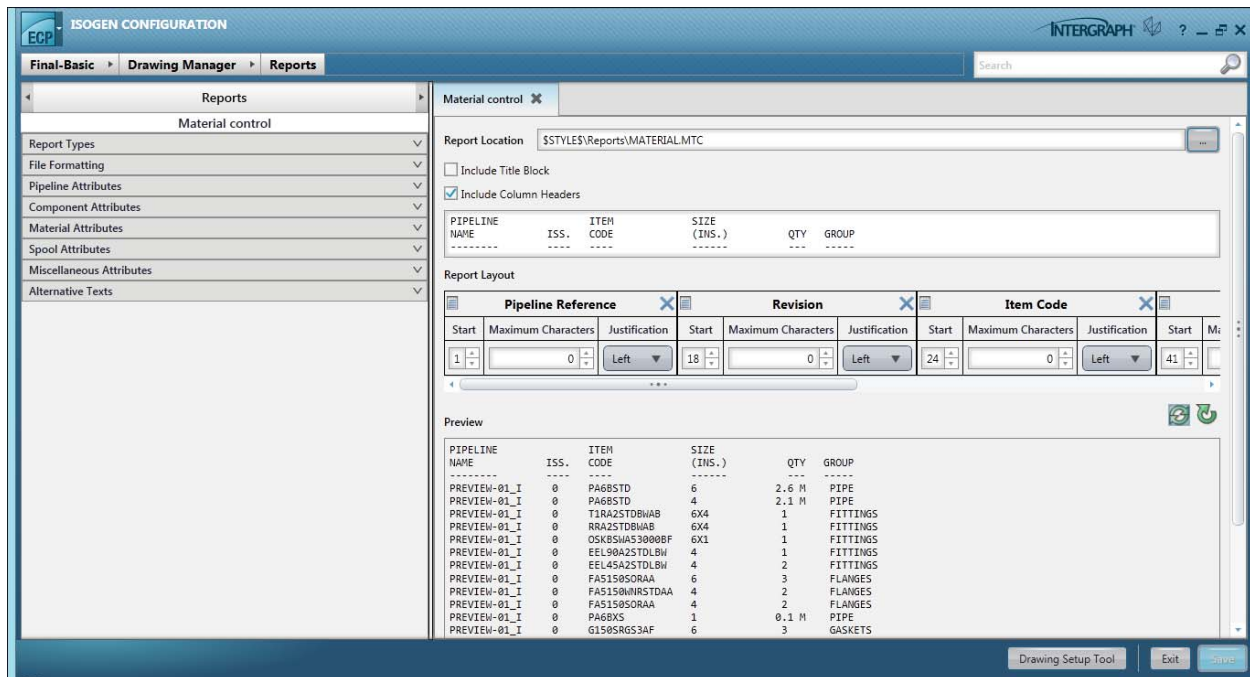
Apply

To the right of the Options panel is the Drawing Preview panel





**Note.** If a report style group had been selected (not applicable to the Check style, it has no reports to configure), this side of the interface would show the Report Definition Panel instead, like that shown in the example below



## Drawing Preview tools

Directly above the Drawing Preview panel are the Drawing Preview tools



To understand what each tool does, pass the cursor over each icon to see its fly text.

Experiment with each of these tools to manipulate the view in the Drawing Preview panel.

**Note.** If you want more information about how each tool functions, refer to online help, which is accessible via the icon.

**Note.** To cancel the active View command, do one of the following: select a different command, click



Select , or right-click anywhere in the Drawing Preview panel.

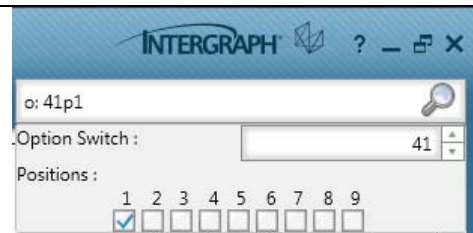
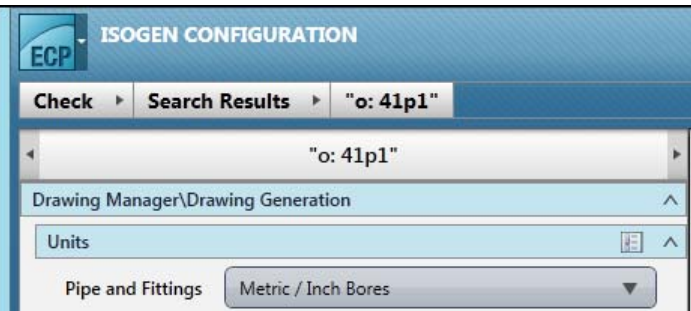


## Search

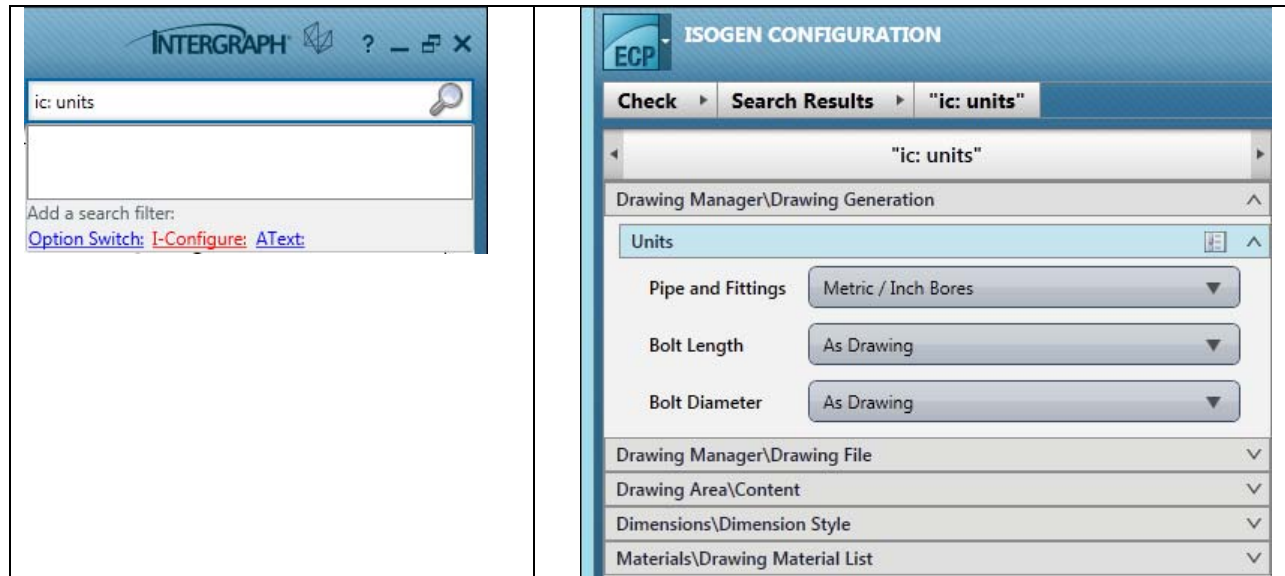
Just above the Drawing Preview tools is the Search box. Any word, number or symbol entered in this field acts as a filter. Various methods are provided to locate any ISOGEN control/option/property.

For example, if you wanted to find Units, you could filter based on either

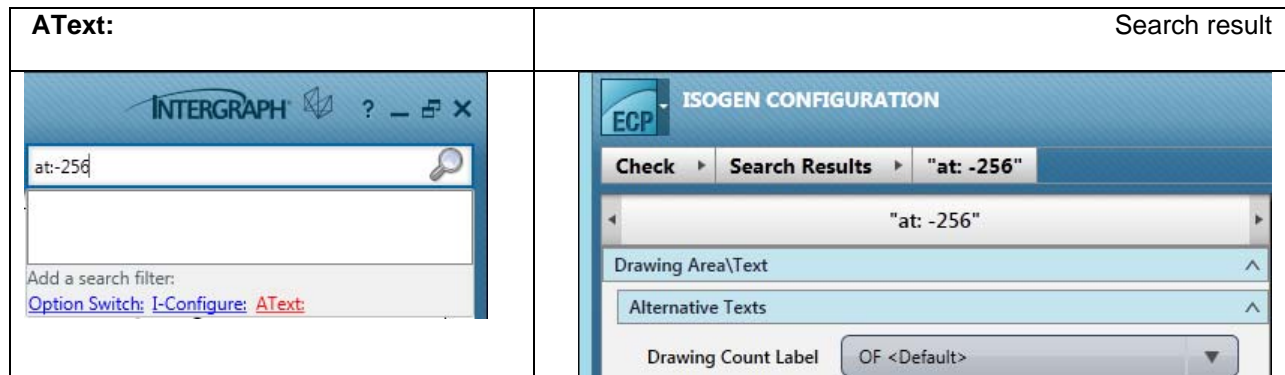
Keyword:	Search result
	

Option Switch:	Search result
	

I-Configure property name:	Search result
----------------------------	---------------

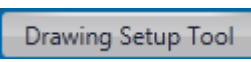


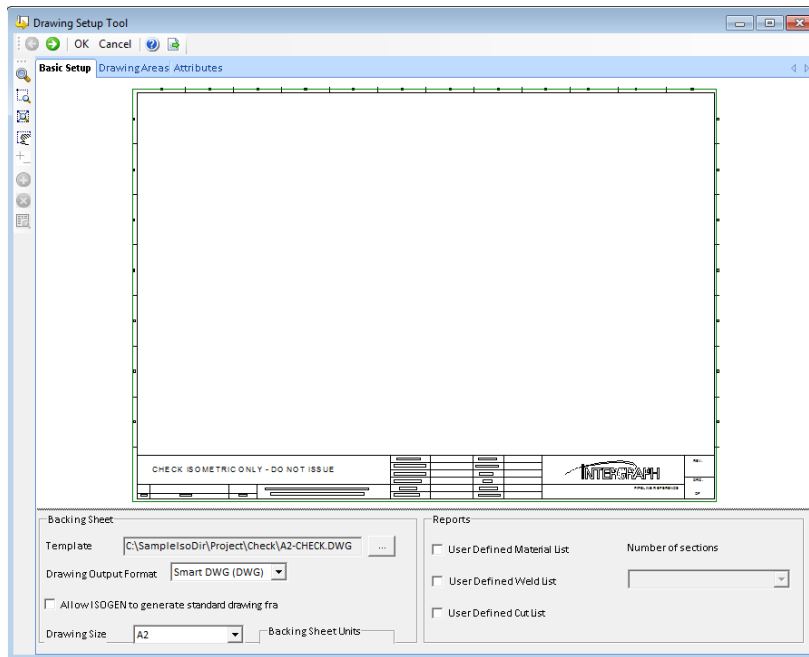
In the case of ATexts, you can enter the number if known or typing -ve will find the Alternative Texts applicable to the current breadcrumb trail.





## Drawing Setup Tool

Finally, take a quick look at the Drawing Setup Tool.

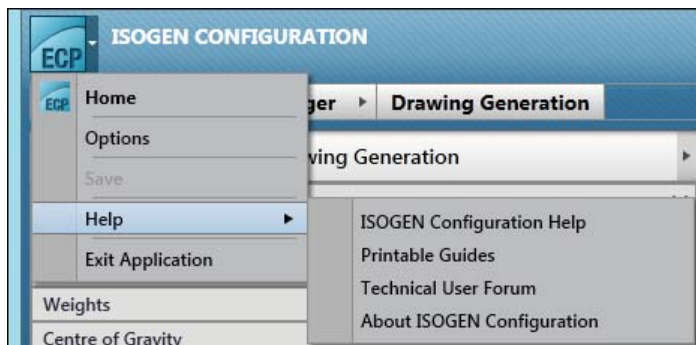
Click 



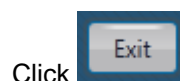
Quickly step through this using  then click  to Exit.

### ISOGEN Configuration menu

The ISOGEN Configuration menu provides access to online help and printed documentation, the Technical User Forum on Linked In, and information needed when entering service requests into Smart Support.




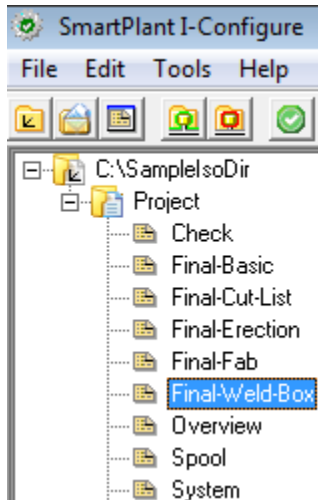
Click Home then



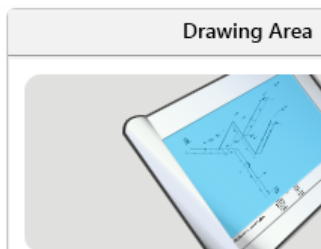
## Editing isometric styles in ISOGEN Configuration

Now that you know what the interface looks like and how it works, it's time to update the Final-Weld-Box style to make it usable in CADWorx.

Select the Final-Weld-Box style then click the  button

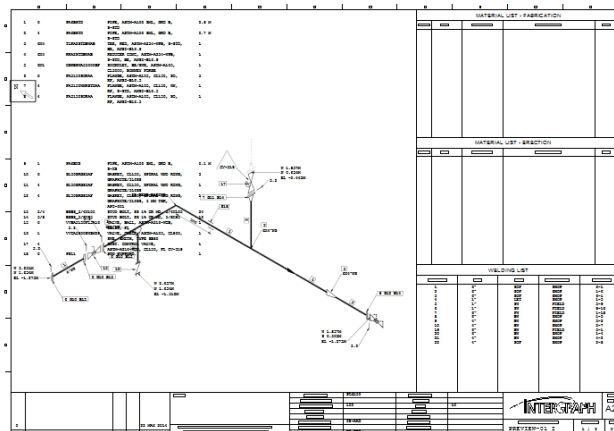


After a few moments the ISOGEN Configuration home screen will appear.



Click [Piping Components](#) to see the Drawing Preview panel.

What's wrong with the drawing currently?



A number of issues exist:-

- Key dimensions are missing
- No weld numbers are shown
- Gasket graphics and dimensions are shown
- Bends are represented by a square graphic
- Connection references are not shown
- Elevation co-ordinates are not shown at direction changes
- The Instrument tag is displayed in a triangle enclosure
- The top margin is not set correctly
- The bill of material is not positioned correctly
- A Material Control report is missing.

Basically, it's a mess!

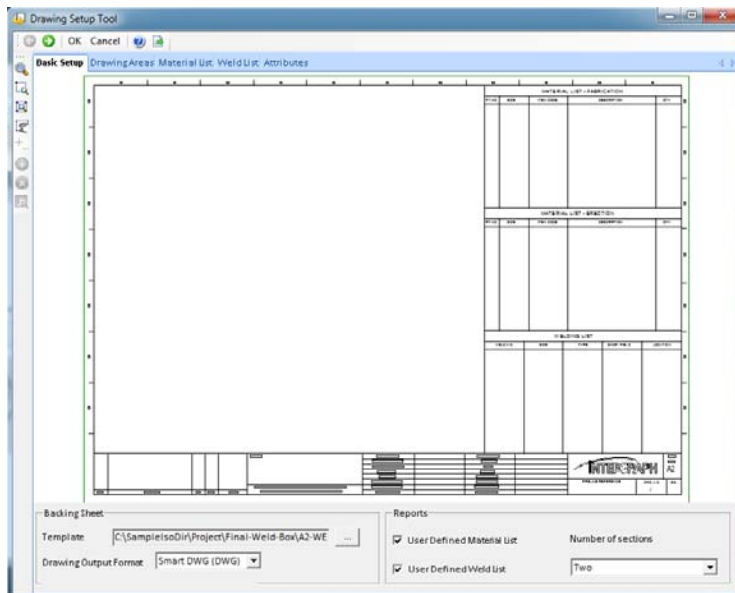
Make the following changes using ISOGEN Configuration:-


## Drawing Setup Wizard: Margin and Bill of Material

So that it's easier to change the other settings later, set the correct drawing margin and reposition the material list first

On the Home screen click

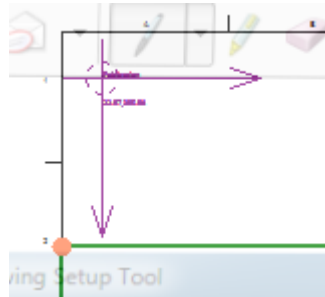
**Drawing Setup Tool**



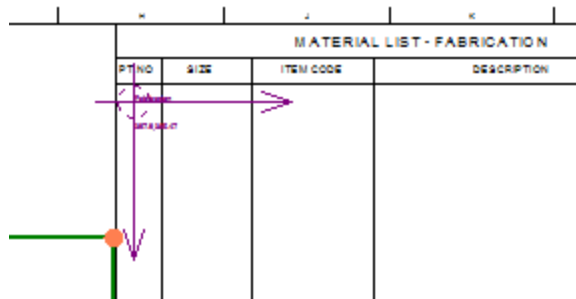
Click  to move to the next screen

**Tip:**  the Drawing Setup Wizard and click  to fit the view.

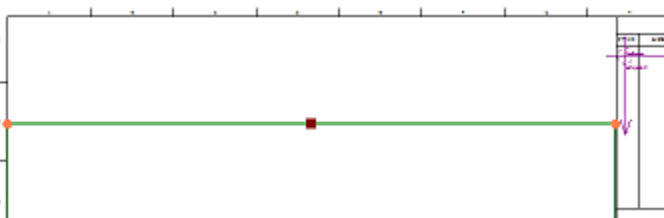
Using the Left-hand mouse button (LHB), grab and move the topmost purple arrow at the top of the screen



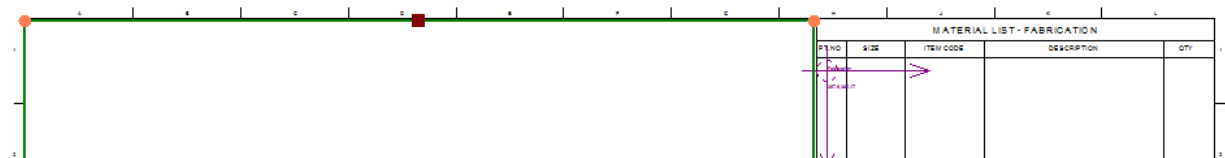
Reposition it in the PT-NO column of the FABRICATION section of the bill of material



Next, using the LHB, click on the orange square in the centre of the top green line and drag the green line to the top border edge

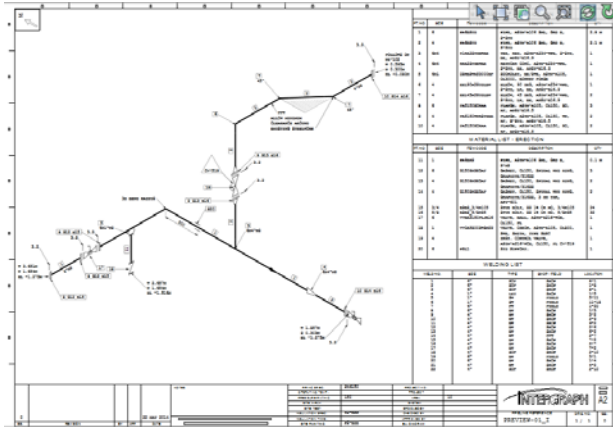


Until it is like shown below, then release the LHB.



Click **OK** to accept the changes. The Drawing Setup panel closes.

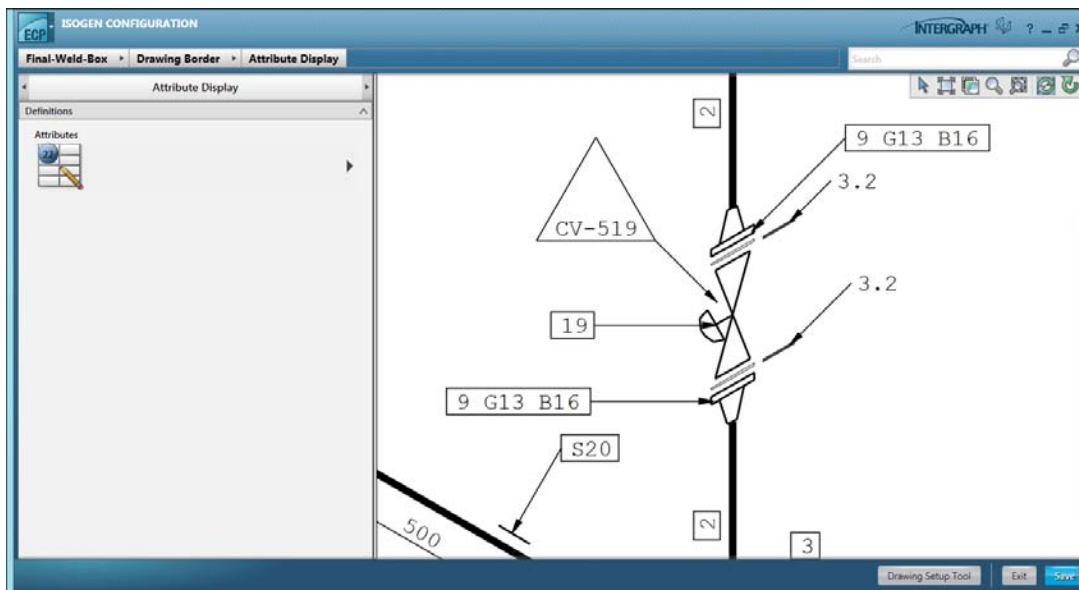
The Drawing Preview Panel is displayed and you will see that these two out of the eleven problems are now resolved, the drawing looks much better already!



Click .

## Instrument enclosure

Zoom in so that the Drawing Preview panel is as shown



Next, change the instrument enclosure

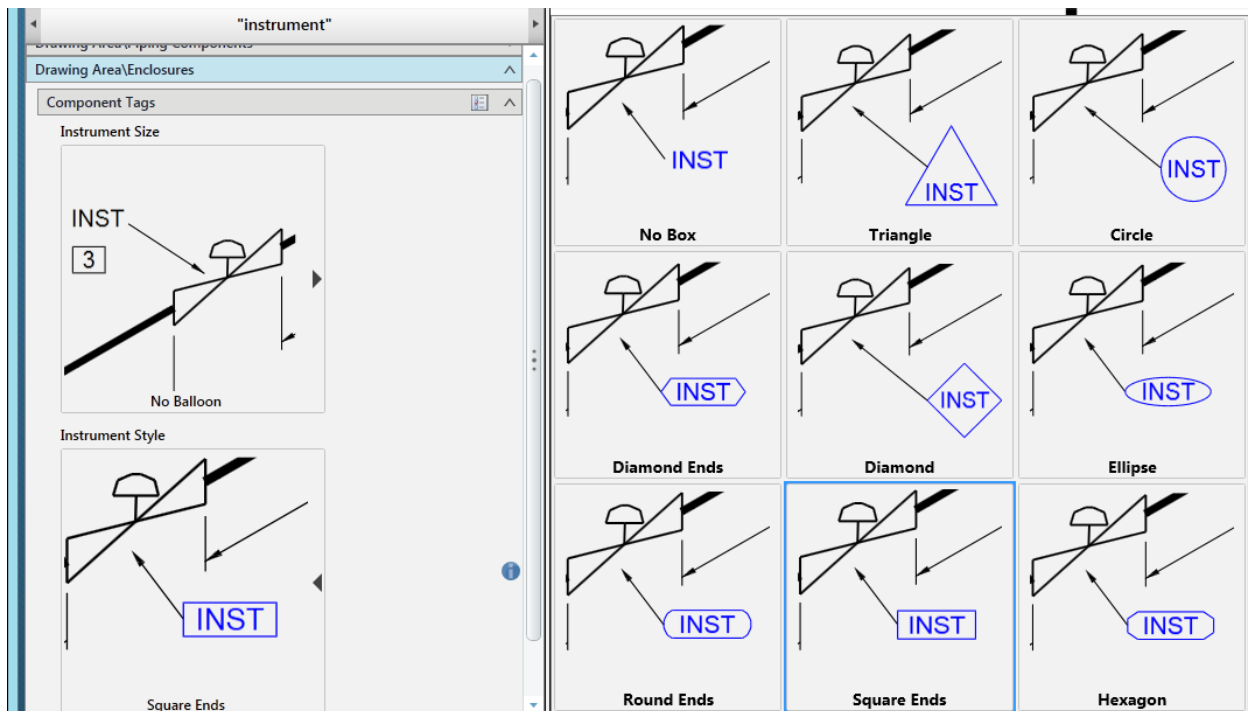
Type  in the Search field then click the Search icon.

The Option group updates to show



Now, we know that the feature of the isometric that we want to change is in the Drawing Area part of the isometric, and what it is that we want to alter is an enclosure, so...

Click on next to **Drawing Area\Enclosures** then select Square Ends

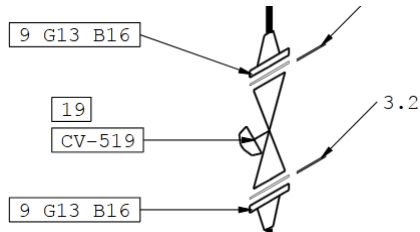


**Note.** By default, the drawing view in the Drawing Preview panel updates automatically whenever a drawing property is modified. However, if Automatically Refresh is turned off, you must manually update the drawing view by clicking Refresh on the View toolbar. Each time ISOGEN has to regenerate the display in the Drawing Preview panel, you will see this icon appear in the Drawing




Preview tool bar. Sometimes the refresh can take a few seconds, so please be patient whilst the update completes.

You should now see




**Note.** To cancel the active View command, do one of the following: select a different command, click

Select , or right-click anywhere in the Drawing Preview panel.

Still focusing on the same area of the drawing, there are two further changes needed here...


- 'F' is missing from the part number box
- We want to turn off the display of gasket dimensions and gasket graphics

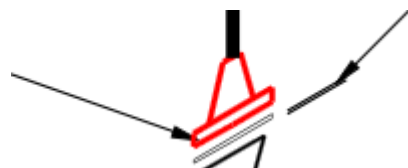
But, how do you find those if you're new to ISOGEN Configuration, or even, ISOGEN?

Click .

## Flange part number

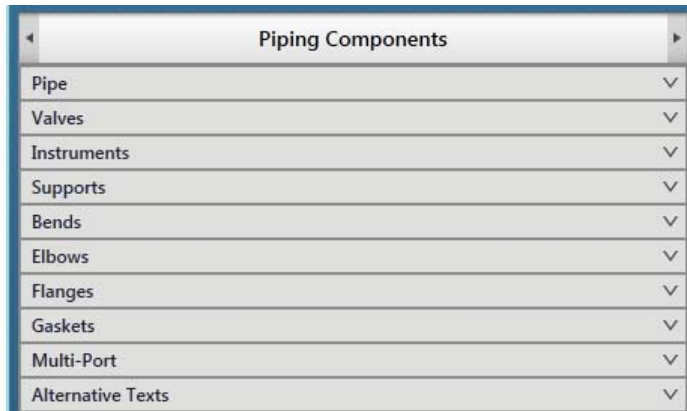
A good way to find relevant options is to click on the pipeline graphics themselves. When you do this, ISOGEN Configuration determines that you want to see all options applicable to the drawing feature. Normally however, this returns a higher number of options than a more focused search will. This is very useful though when you want to find and work with a number of related options in parallel.

Select  then double click on the flange so that it highlights as shown



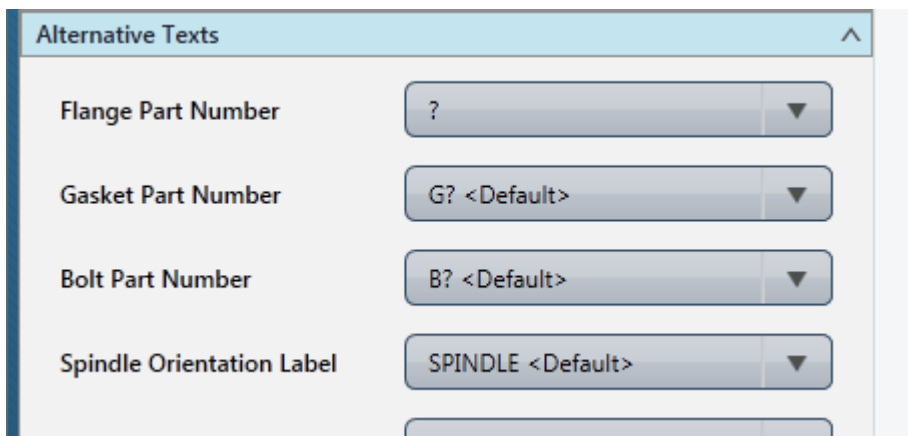
**Note.** The highlight is only temporary; as soon as all applicable options have been found by the software, the Drawing Preview returns to its normal appearance.

You'll see that the Option panel updates to show

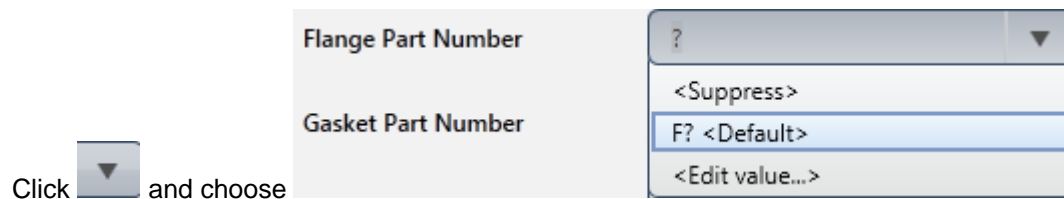


Now, you might expect, if you click on Flanges that you will find exactly what you need, but that isn't the case for the change that needs to be made here. Why is this? The display of an 'F' character in the part number box is controlled via ISOGEN's Alternative Text (AText) facility.

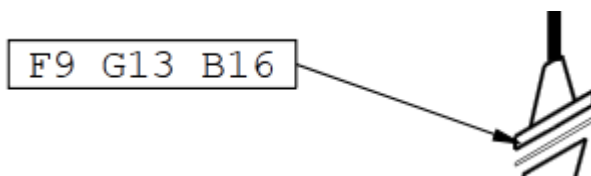
So, instead of clicking on , click  on  to see



Now, fortunately, the AText you need to change is the first one in the list.



The Drawing Preview panel updates to show



Click .

## Gasket display

Next, make the required changes to gaskets.

Do you need to search again or are the options you need accessible already? Well, one of them is!

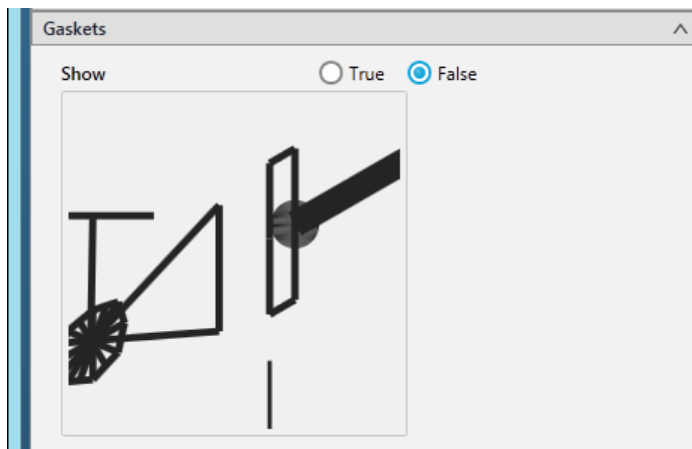
If you look further up the Option group panel, you can see there's a Gaskets option.

Click  to close .

Click  to open .

The option available controls the graphical display of gaskets, but not the display of gasket dimensions.

Click



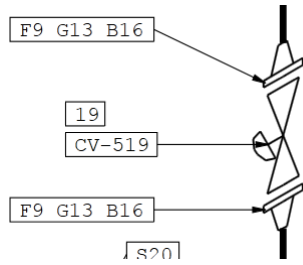
Click .

## Gasket dimensions

A gasket is a pipng component, and what you want to change now is how dimensions are displayed for it.

Using this information use the breadcrumb trail to find the relevant option to change.

Having done that, the Drawing Preview panel should look like this – there should be no gasket graphics, and no gasket dimensions shown



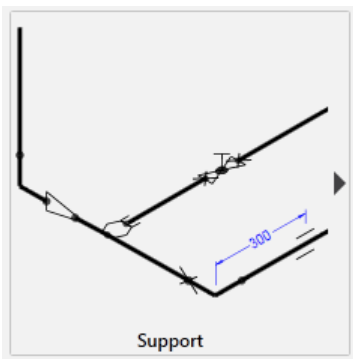
Click .

## Dimension style

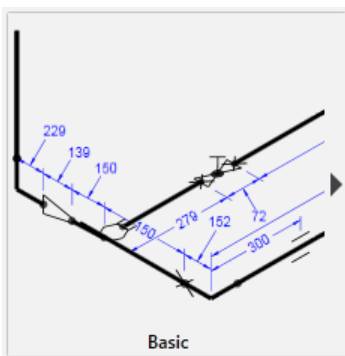
Next you will set the style of dimensions for the pipe.

Again, where are you in the hierarchy? Can you find the option from here? Two clicks are all you need to find the right option!

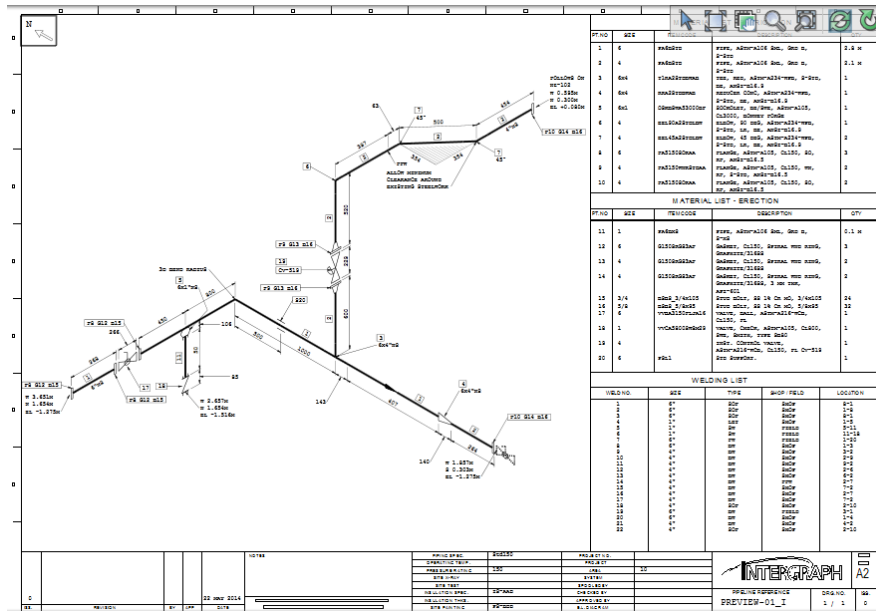
Use the breadcrumb to find this option



Then select this



After updating, the Drawing Preview panel should show

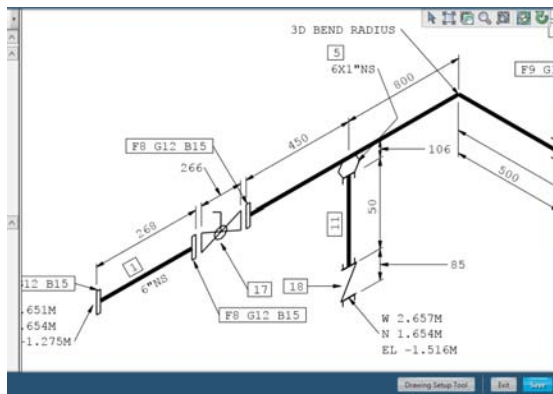


Click

## Weld numbers

Next, you want to control the appearance of weld numbers.

Zoom in so that the Drawing Preview panel shows



You will see that welds are not visible, so before you can show the numbers, you have to show the welds themselves.

Search for

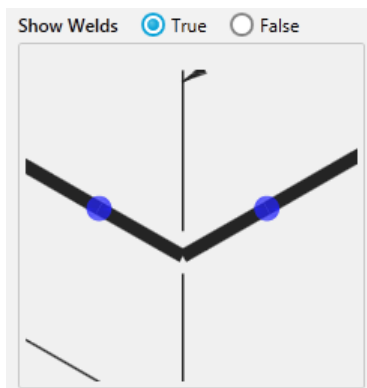
o: 54p1

Option Switch : 54

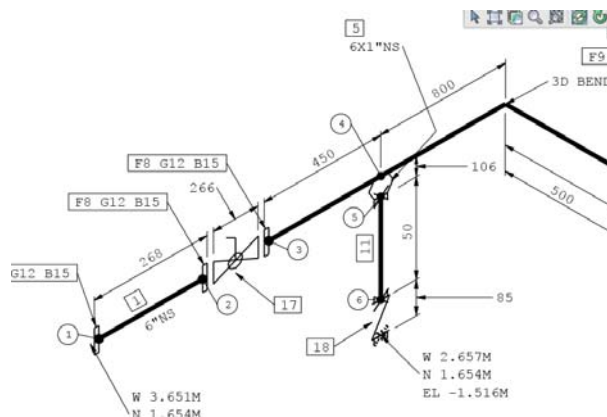
Positions :

1	2	3	4	5	6	7	8	9
<input checked="" type="checkbox"/>	<input type="checkbox"/>	<input type="checkbox"/>	<input type="checkbox"/>	<input type="checkbox"/>	<input type="checkbox"/>	<input type="checkbox"/>	<input type="checkbox"/>	<input type="checkbox"/>

Select



The Drawing Preview panel updates to show



**Note.** Some ISOGEN controls are mutually inclusive. For example, if the display of welds is False, then weld numbers are not visible. On the other hand, some ISOGEN controls are mutually exclusive, for example, if the display of weld numbers is False, welds can still be visible. Unfortunately users can fall foul of this condition, which often leads to frustration when trying to configure ISOGEN.

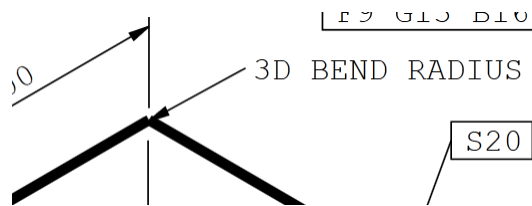
**Tip:** Always check the  to see if these conditions exist for a particular option you wish to use.

Click .

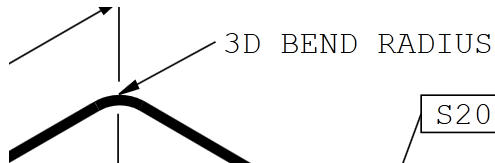
## Bend representation

Next, change the display of the bend, which is a piping component, in the drawing area.

From square



to round

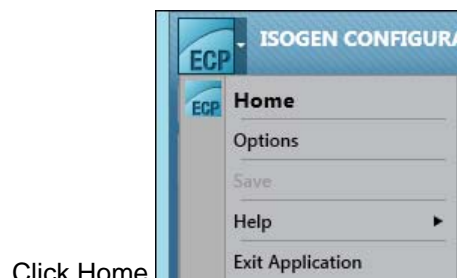
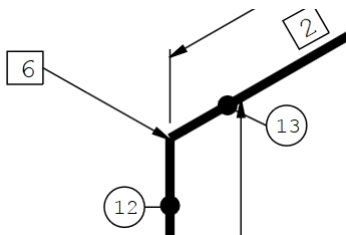


Click .

## Elevation co-ordinates at direction changes

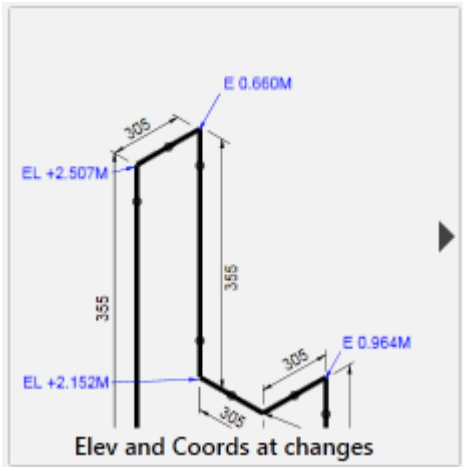
Co-ordinates and dimensions are related and can be output when a direction change occurs in the pipeline - either at a branch or elbow/bend.

Currently they are not shown

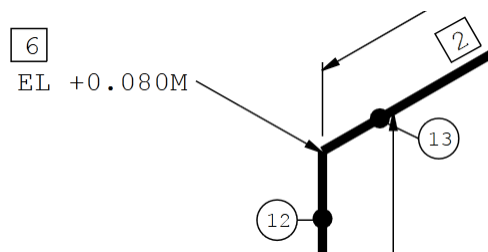


Click Home then, remembering that you want to change co-ordinates, pick the most relevant style category.

Select this option



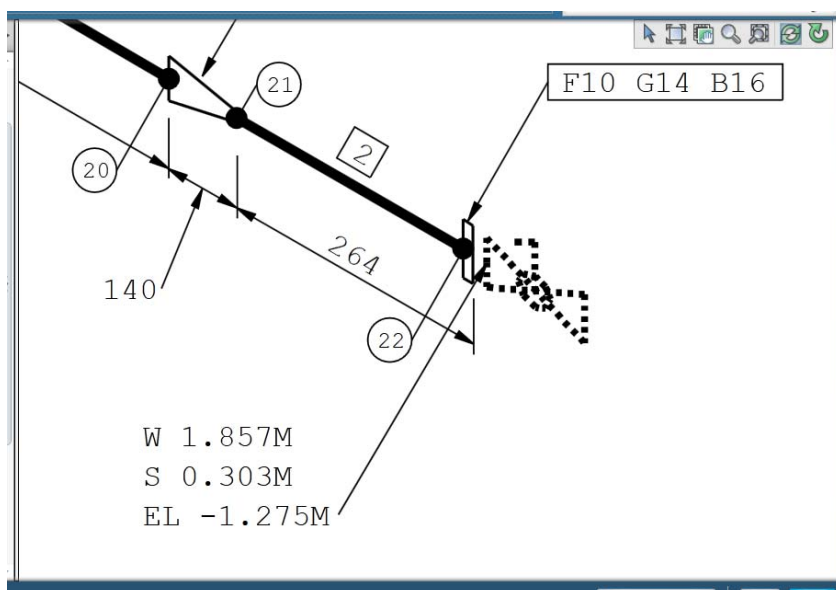
The Drawing Preview panel should show



Click .

## Pipeline continuation message

Zoom in to this area





Pipeline continuations are part of drawing area content.

Which of these breadcrumb trails controls the display of pipeline continuation messages?

- **Final-Weld-Box** ▶ **Drawing Manager** ▶ **Style Properties**
- **Final-Weld-Box** ▶ **Drawing Area** ▶ **Piping Features**
- **Final-Weld-Box** ▶ **Drawing Area** ▶ **Content**

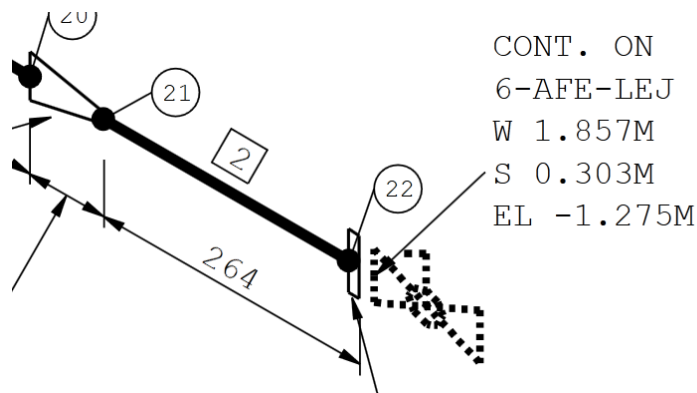
You're looking for this option

Pipeline Continuation <Suppress> ▼

Select this from the drop down

Pipeline Continuation CONT. ON <Default> ▼

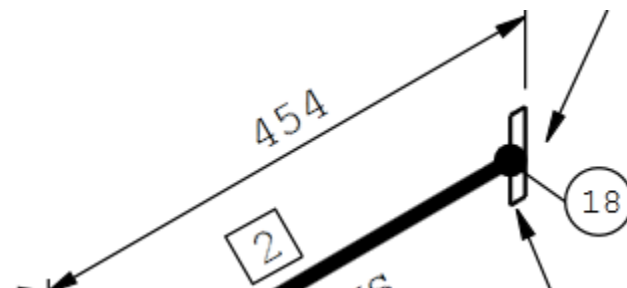
The Drawing Preview panel updates to show



Click Save.

## Show equipment nozzle graphic

Next, show the nozzle piping feature here



Enter show into the search field



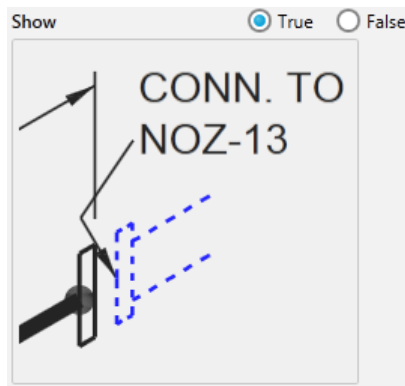
Chose the correct Option group from the list



The screenshot shows the 'ISOGEN CONFIGURATION' window with the 'Search Results' tab selected. The search term 'show' is entered in the search field. The results list includes the following items, each with a dropdown arrow:

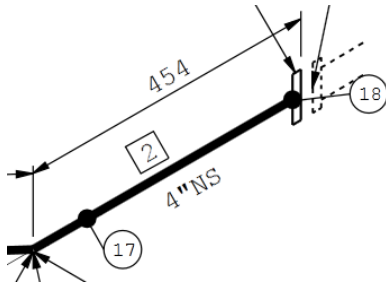
- Drawing Manager\Drawing Generation
- Drawing Area\Piping Components
- Drawing Area\Piping Features
- Drawing Area\Enclosures
- Drawing Area\Content
- Dimensions\Piping Components and Features
- Dimensions\Coordinates
- Dimensions\Skews and Falls
- Dimensions\Reference Dimensions
- Materials\Drawing Material List
- Materials\Part Numbers
- Welds\Appearance
- Welds\Drawing Weld List
- Cut Pieces\Drawing Cut List

Select the required option



The screenshot shows a 'Show' dialog box with two radio buttons: 'True' (selected) and 'False'. Below the buttons is a drawing preview panel. The preview shows a piping connection with a label 'CONN. TO NOZ-13' and a dashed blue line indicating a connection point.

The Drawing Preview panel should show



Click 

## Equipment connection message

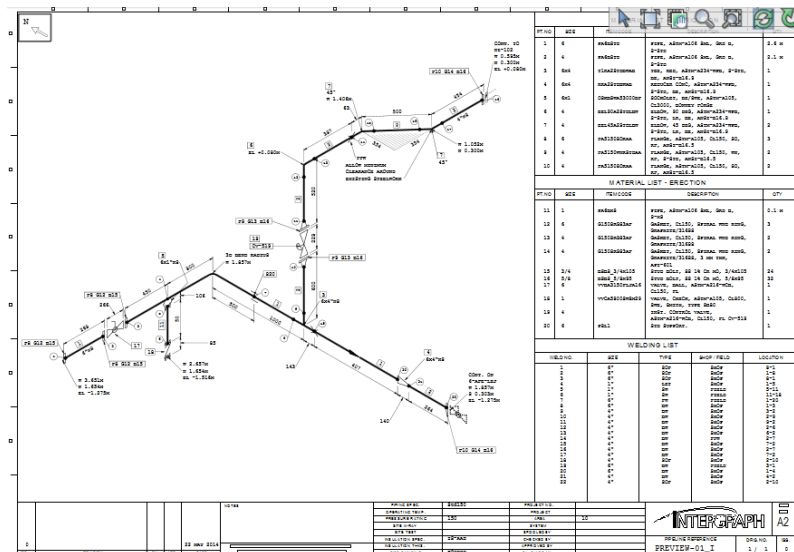
Enter AText -208 into the search field and change this text to the default value

FOLLOWS ON

The Drawing Preview panel should show

CONN. TO  
NZ-102  
W 0.595M  
N 0.300M  
EL +0.080M

The drawing should be in much better shape now!

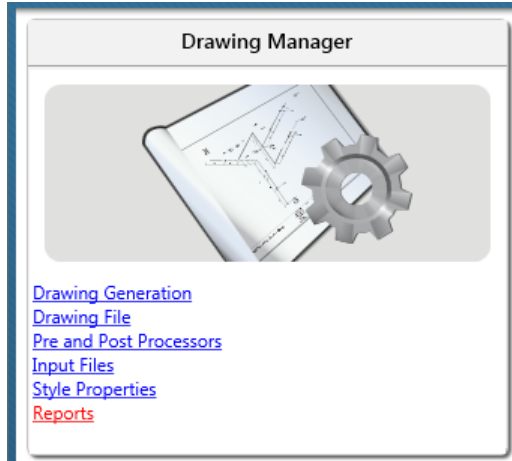



Click 

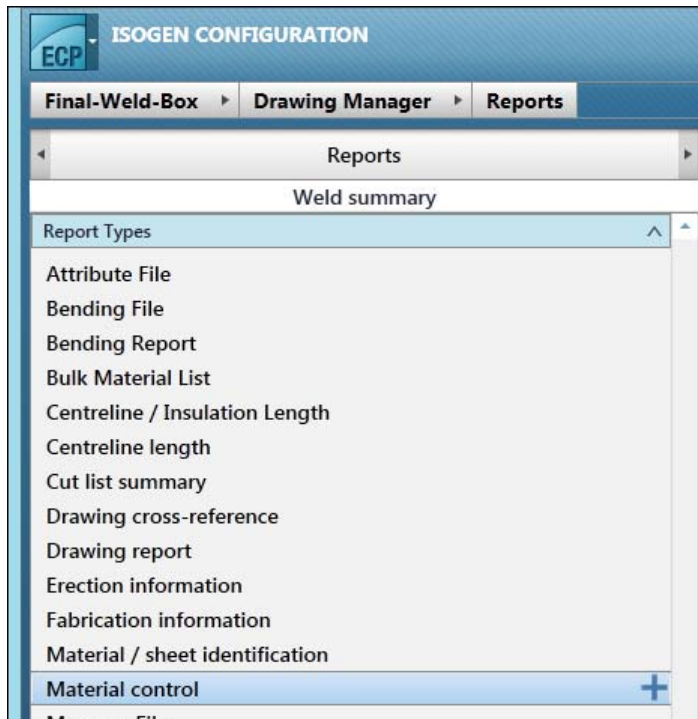
## Material Control report

Finally, for the Final-Weld-Box style, create a Material Control report.

On the Home screen, click on



Click  to create the report



Click the browse  button

Browse to the C:\SampleIsoDir\Final-Weld-Box folder, enter MATERIAL.MTC as the name then click OK.

The field updates to show

Report Location  

Leave these un-checked

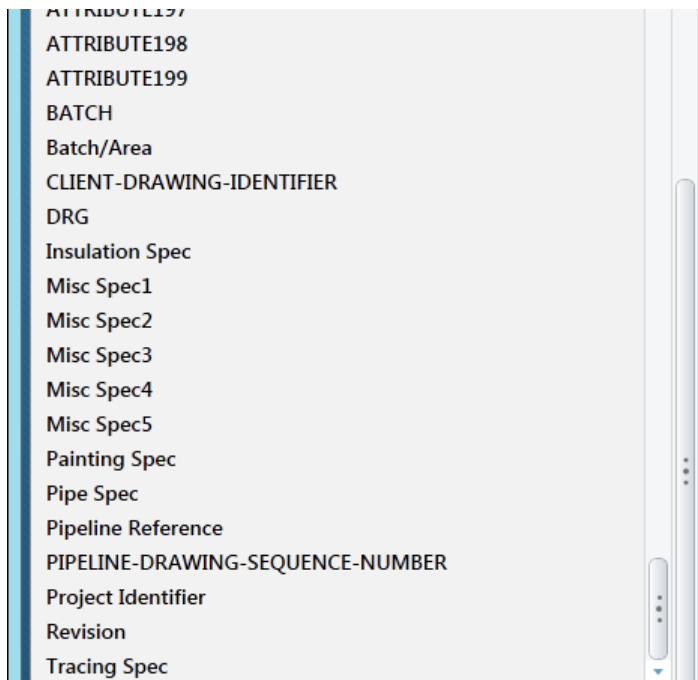
☐ Include Title Block


☐ Include Column Headers

Click on Pipeline Attributes to expand the list



Use both scroll bars, find these attributes towards the bottom of the list



Use , add these Pipeline attributes to the list, setting the spacing and justification per the table below

Attribute	Start	Maximum Characters	Justification	Value
Pipeline Reference	1	0	Left	PREVIEW-01_I
Revision	18	0	Left	0

The Preview should look like this

Preview	
PREVIEW-01_I	0
PREVIEW-01_I	0
PREVIEW-01_I	0
PREVIEW-01_I	0
PREVIEW-01_I	0
PREVIEW-01_I	0

**Note.** It doesn't matter that the Attribute boxes directly above the Preview don't reflect the report layout. The order of these can be changed if you wish though.

Close the Pipeline Attributes option.




Use  to add this Material attribute to the list, setting the spacing and justification per the table below

Attribute	Start	Maximum Characters	Justification	Value
Item Code	24	0	Left	Various

Close the Material Attributes option




Use  to add these Miscellaneous attributes to the list, setting the spacing and justification per the table below

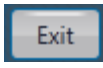
Attribute	Start	Maximum Characters	Justification	Value
N.S.	40	0	Left	Various
Qty	48	0	Left	Various
Group	58	0	Left	Various


The Preview should now look like this

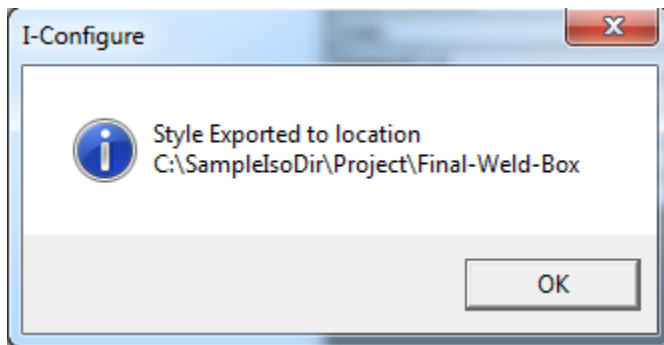
## Preview

PREVIEW-01_I	0	PA6BSTD	6	2.6 M	PIPE
PREVIEW-01_I	0	PA6BSTD	4	2.1 M	PIPE
PREVIEW-01_I	0	T1RA2STDBWAB	6X4	1	FITTINGS
PREVIEW-01_I	0	RRA2STDBWAB	6X4	1	FITTINGS
PREVIEW-01_I	0	OSKBSWA53000BF	6X1	1	FITTINGS
PREVIEW-01_I	0	EEL90A2STDLBW	4	1	FITTINGS
PREVIEW-01_I	0	EEL90A2STDLBW	4	2	FITTINGS

Click  to change to the report.

Configuration is complete. Return to the Home screen and click .

**Important!** Click  on the I-Configure toolbar to export the style to disk.



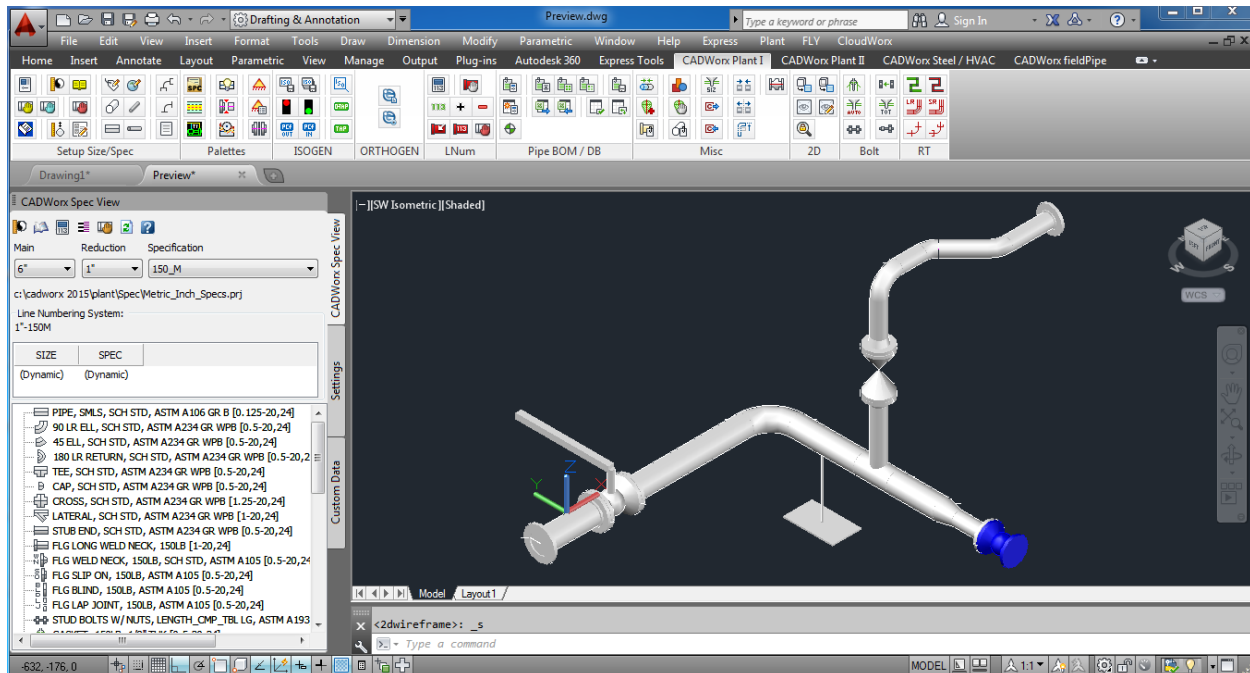
**Note.** This action creates the data input files that ISOGEN needs when generating drawings using this style, including the ISOGEN.FLS file, which CADWorx reads to connect to the style.

## Using the isometric style in CADWorx

**Note.** The CADWorx 2015 release will be the first CADWorx release that contains ISOGEN Configuration.

For this part it is assumed that you know how to operate CADWorx.

1. Start CADWorx 2015.
2. Open C:\CADWorx\Piping\Preview.dwg



3. Run the ISOGENOUT command to execute the ISOGEN process.
4. Check the drawing deliverable ensuring that all of the edits that you made to the style have been applied.
5. Open C:\SampleIsoDir\Final-Weld-Box\MATERIAL.MTC and review this too (if prompted by Windows to select an application capable of opening files with a .MTC extension, pick Notepad).

**Note.** You won't see an equipment connection reference on the isometric drawing because the piping model does not contain a connection to an equipment nozzle. Furthermore, the dimensions may not necessarily match with those that you see in the Drawing Preview panel in ISOGEN Configuration.

###

The main objective of this workshop was to introduce you to the new ISOGEN Configuration, so if you've reached this point by the end of the 45mins, you've achieved what you needed to!

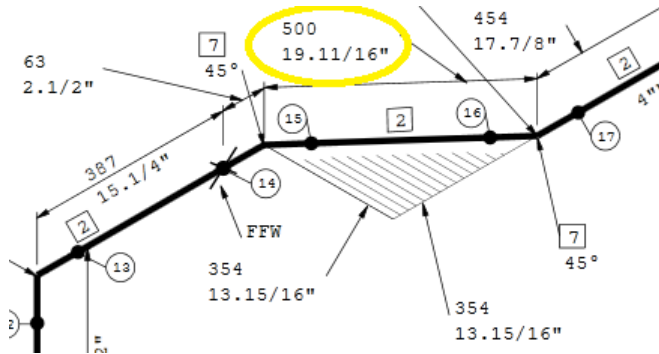
Everything else that follows is considered to be optional. If you have time, please continue, otherwise, don't forget, this document is yours to take away!



## Making changes to the isometric style

If you have time, using the navigation techniques that you learnt earlier, make the following changes to the style then run ISOGENOUT in CADWorx again on the pipe model to see the effect of those changes on the isometric drawing.

Double Units:



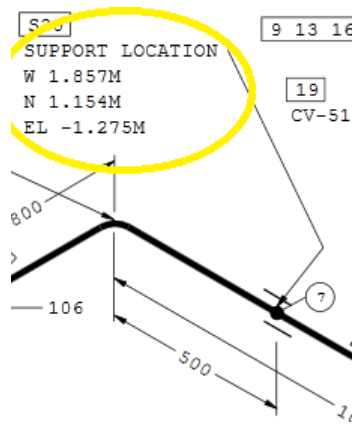
Hint: Dimension style

Change FIELD to SITE in Welding list:

WELDING LIST				
WELD NO.	SIZE	TYPE	SHOP / FIELD	LOCATION
1	6"	SOF	SHOP	8-1
2	6"	SOF	SHOP	1-8
3	6"	SOF	SHOP	8-1
4	1"	LET	SHOP	1-5
5	1"	SW	SITE	5-11
6	1"	SW	SITE	11-18
7	6"	FW	SITE	1-20
8	6"	BW	SHOP	1-3
9	4"	BW	SHOP	3-2
10	4"	BW	SHOP	2-9

Hint: AText

Output co-ordinates at support locations:



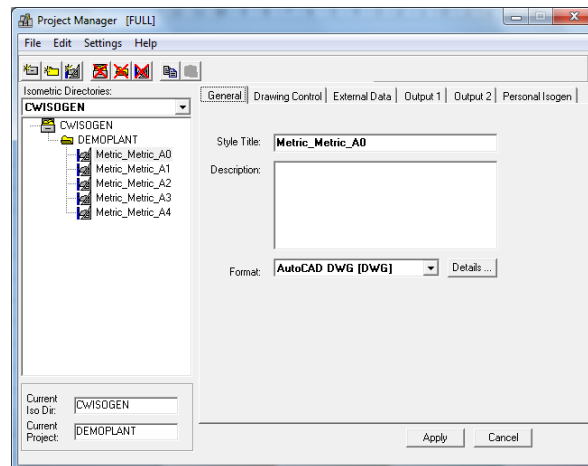
Hint: Co-ordinates

**Note.** Answers are provided at the back of this document.

## Appendix I: Upgrading from Project Manager to I-Configure

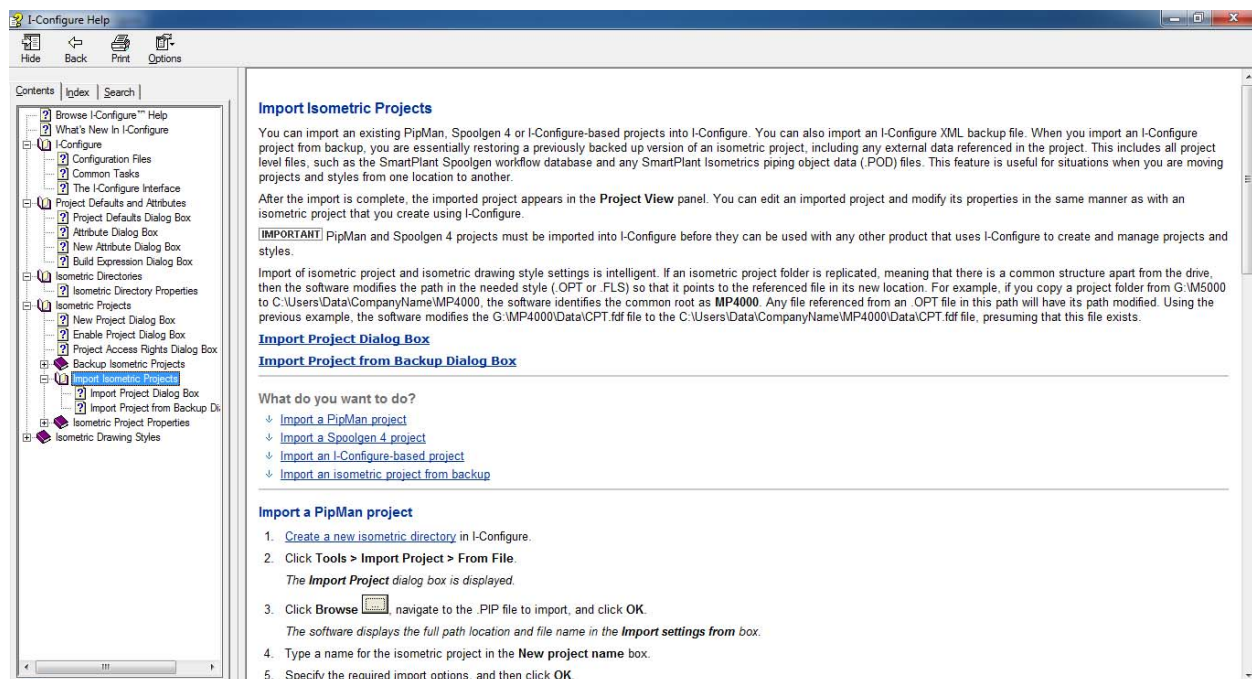
### Upgrading Project Manager (PipMan v2) projects and styles to I-Configure format for editing in ISOGEN Configuration

Many CADWorx users still use the old Project Manager (PipMan v2) application to configure ISOGEN



If you are one of them, the good news is you can easily migrate from this application to I-Configure and then take advantage of ISOGEN Configuration to more easily configure and manage your isometric directories, projects and styles.

The I-Configure help file provides detailed instructions explaining how to do this



## Appendix II: Answers

