



Using AutoCAD to Maximize Your CADWorx Project's Success

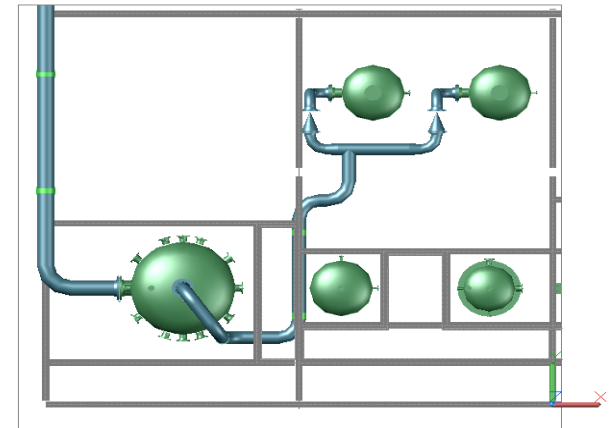
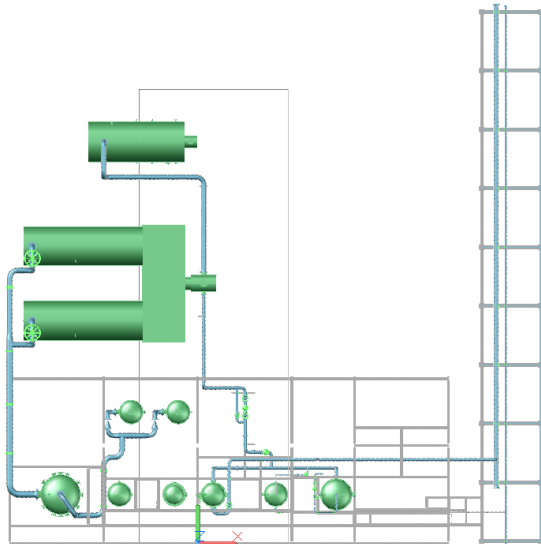
C Greg Silva

System Variables



- Indexctl set it to 3 by default AutoCAD sets it to 0
 - 0 No index are created
 - 1 Layer index is created
 - 2 Spatial Index is created
 - 3 Layer and spatial indexes are created
- Xloadctl set it to 2 which is the default
- Visretain set it to 1

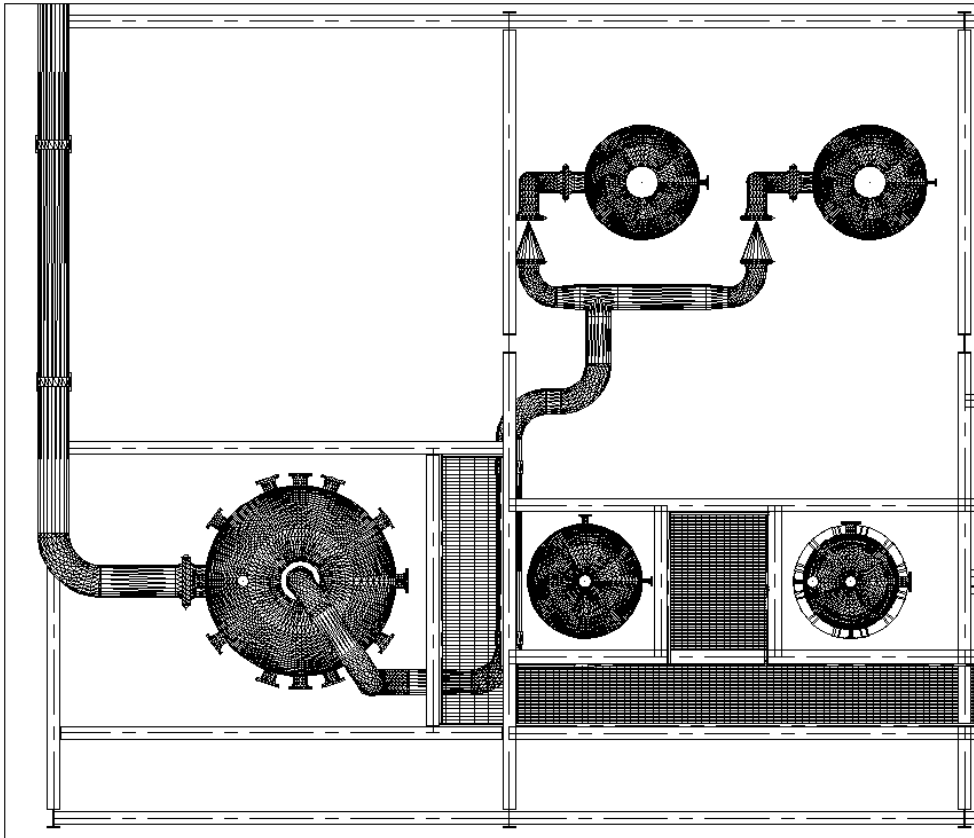
What can you do now to utilize the Indexctl system variable? XCLIP



Plotting



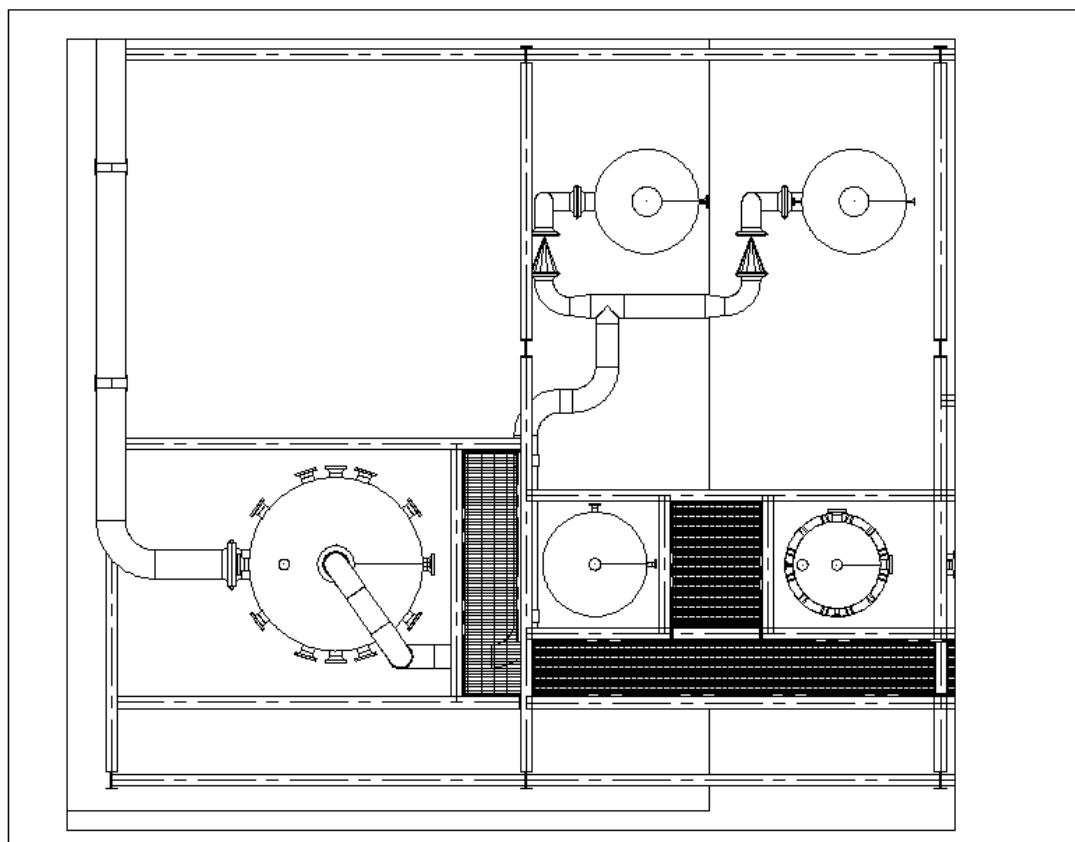
Plotting in CADWorx with AutoCAD default settings.



Plotting



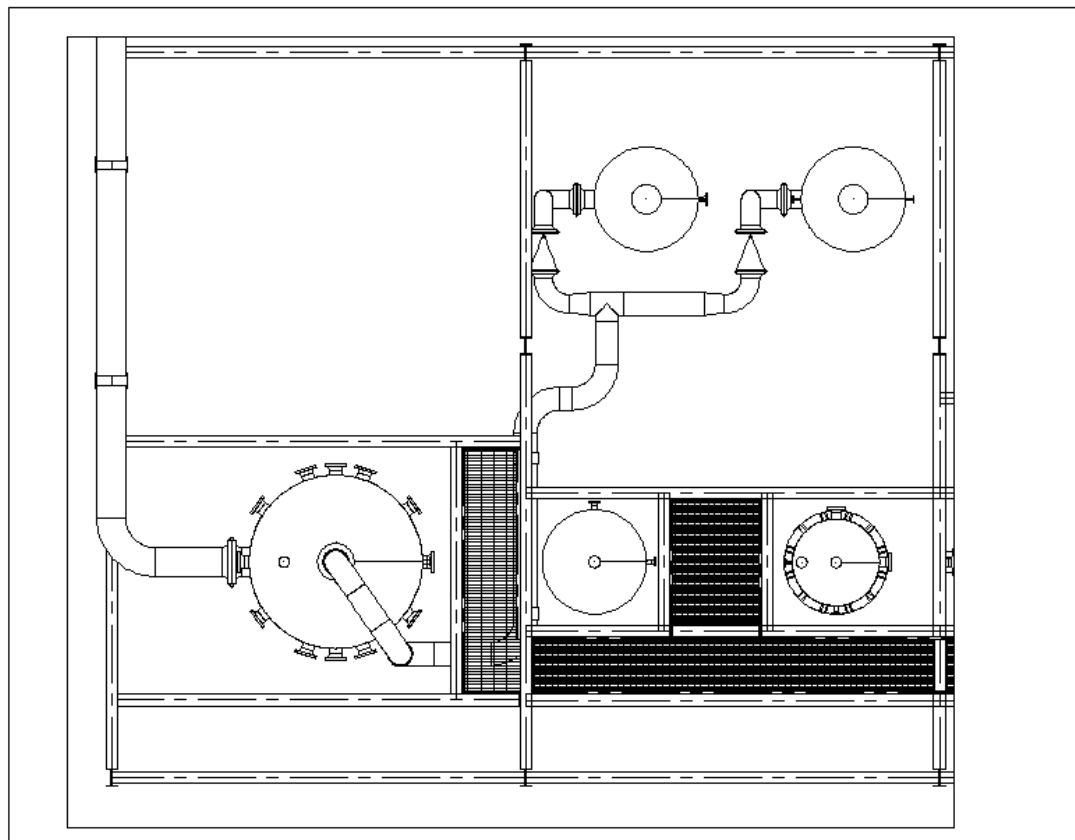
DISPSILH = 0
FACETRES = 5
HIDEPRECISION = 1
VIEWRES = 20000



Plotting



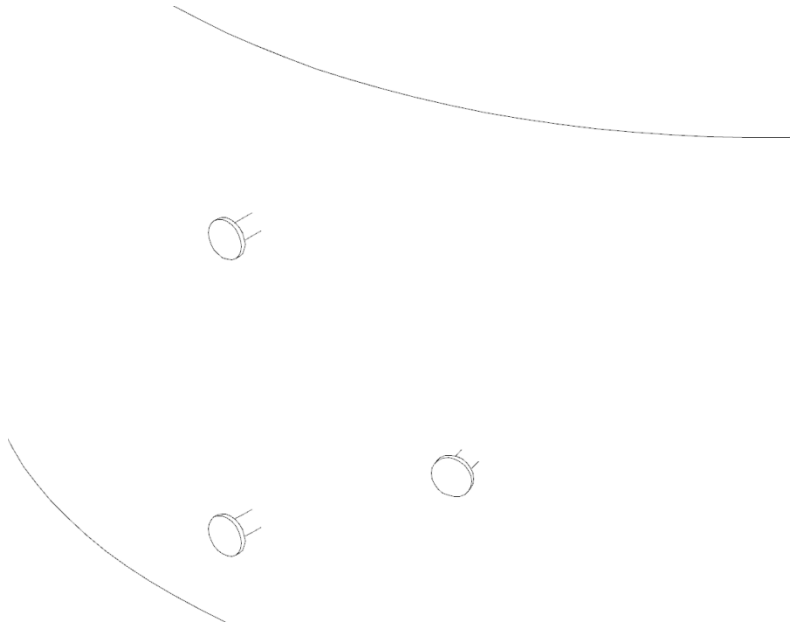
FACETRATIO = 1



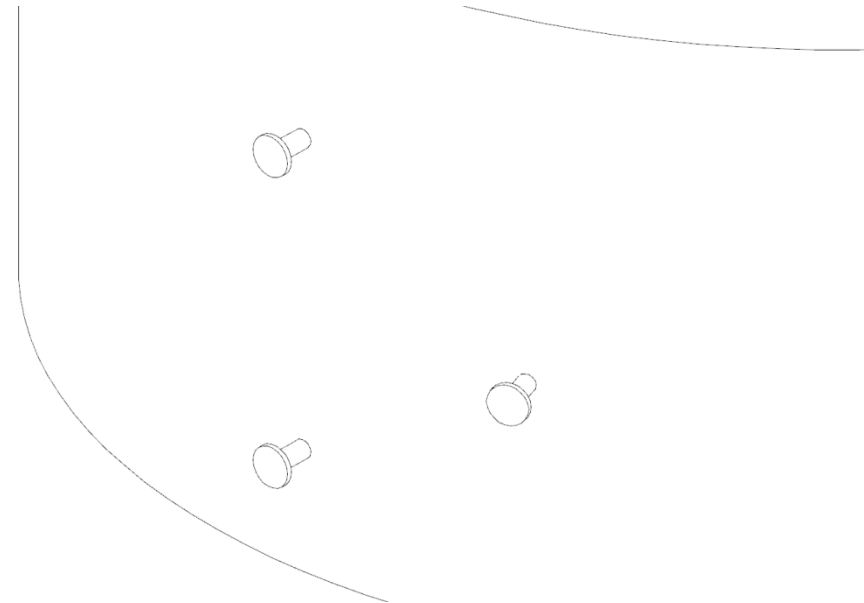
Plotting



INTERSECTIONDISPLAY



INTERSECTIONDISPLAY = 0

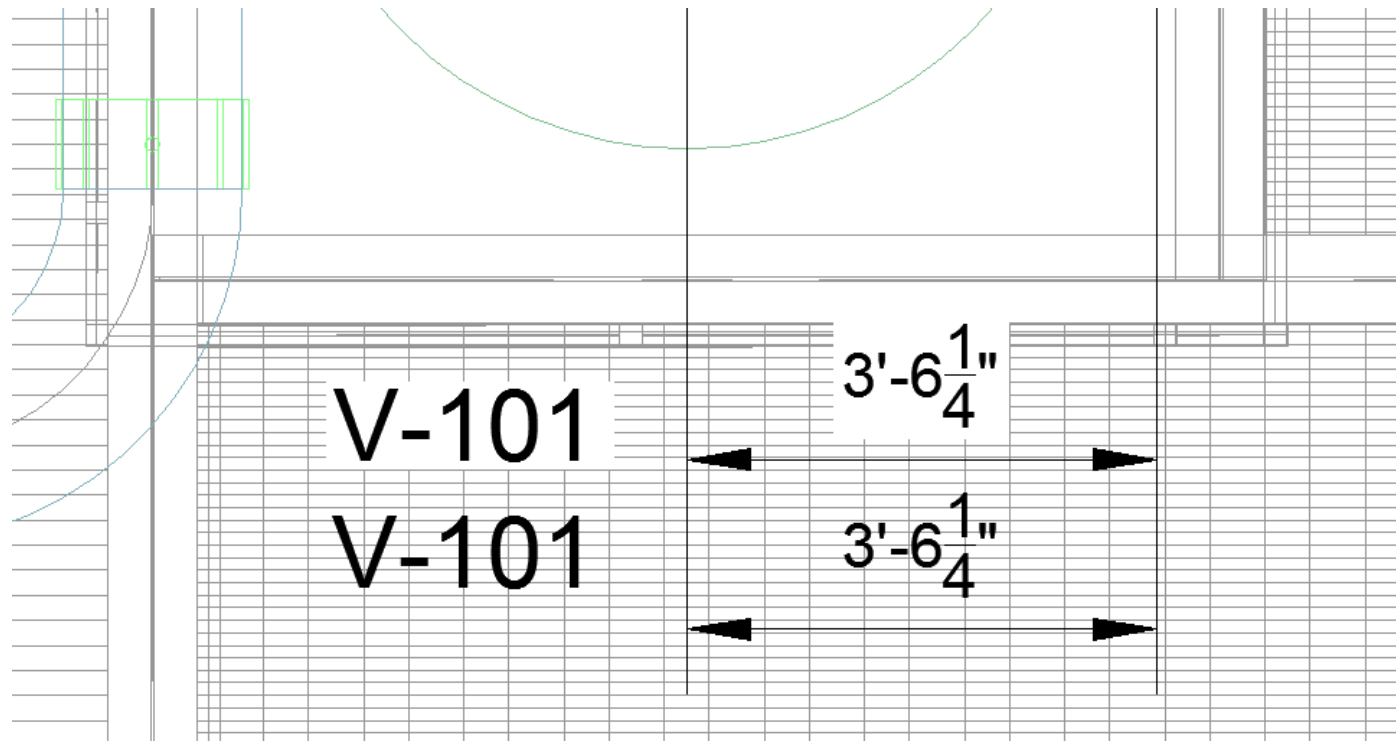


INTERSECTIONDISPLAY = 1

AutoCAD commands and features.



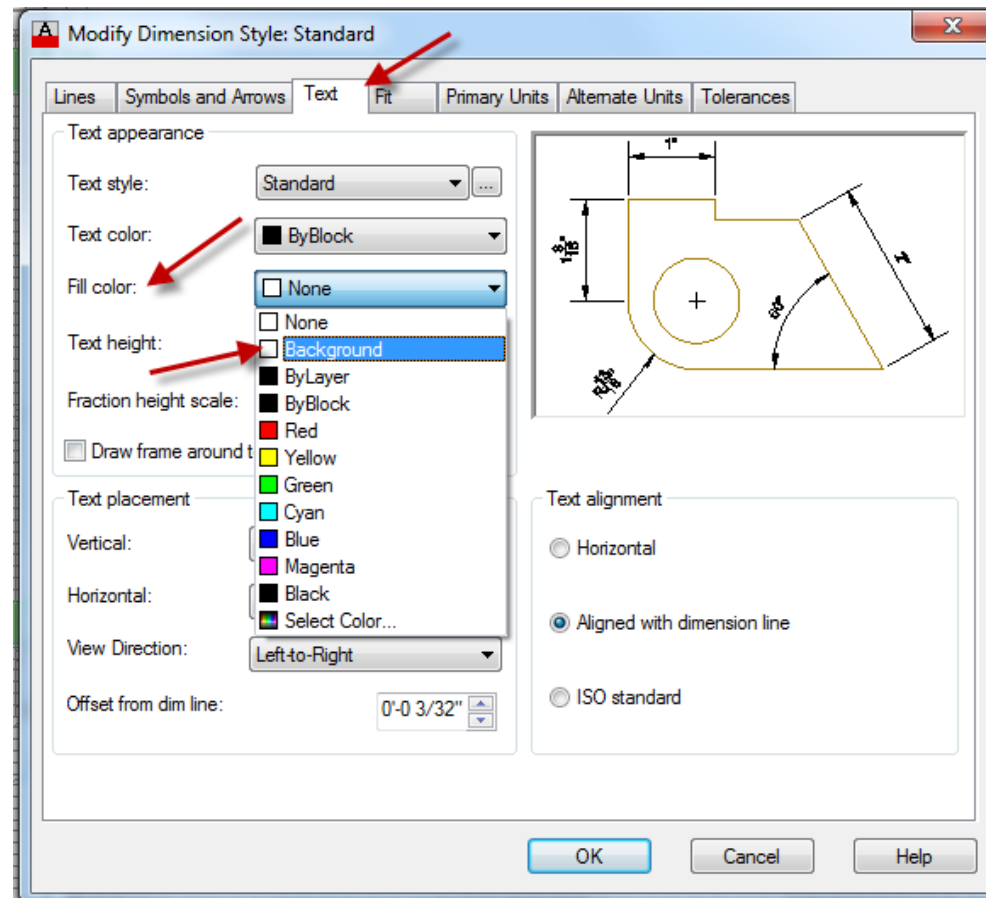
Add the background mask to Mtext and Dimensions to help keep dimensions and text legible.



AutoCAD commands and features.



Dimensions: Add background fill color to your dimension style.



AutoCAD commands and features.

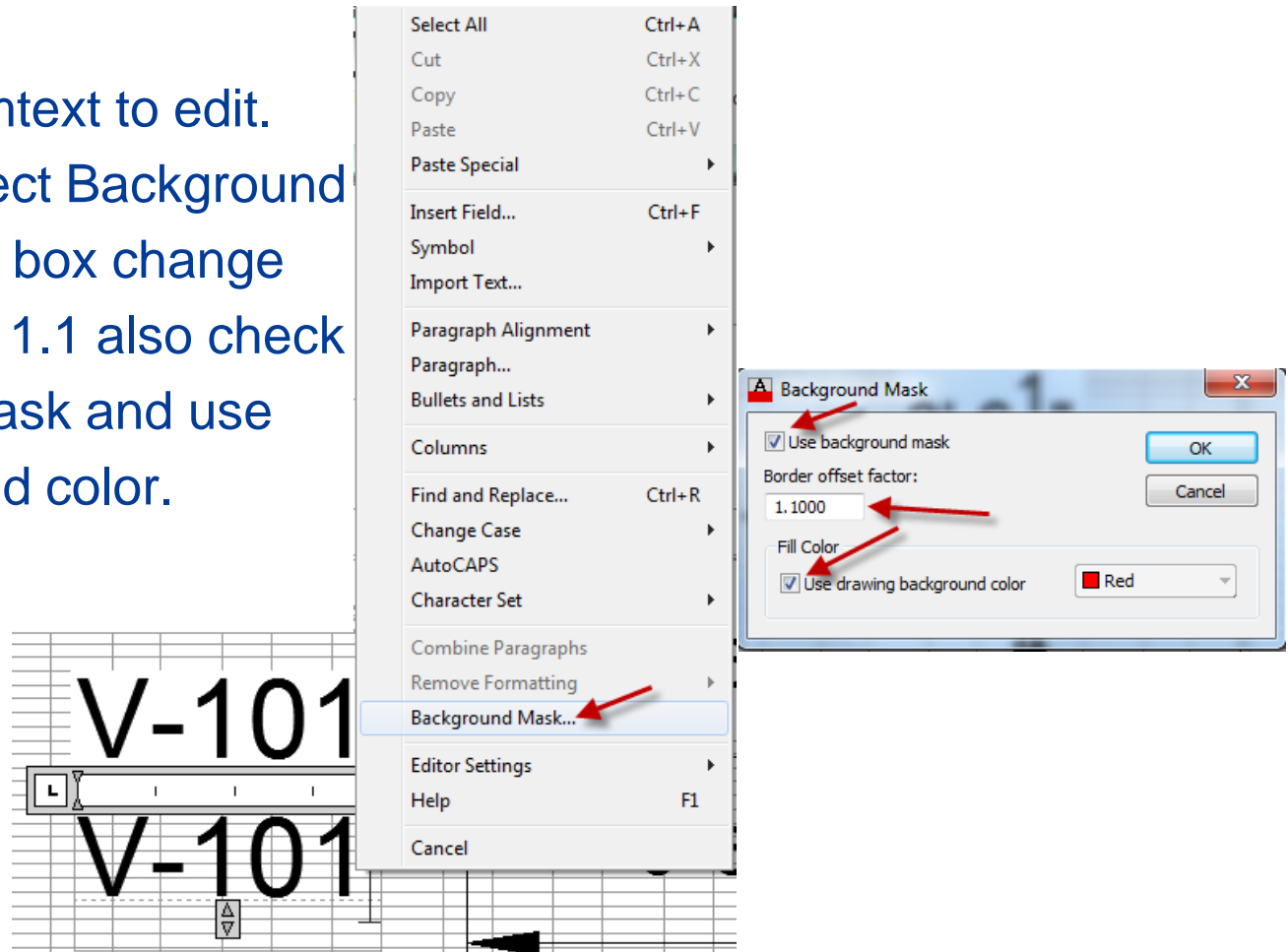


Mtext:

Double click your mtext to edit.

Right click and select Background Mask.

In the dialog box change The offset factor to 1.1 also check use background mask and use drawing background color.



AutoCAD commands and features.



Fields.

Use AutoCAD Fields to fill in important parts of your title block box. If you are using Sheet Sets they are even more valuable.

The 'Enhanced Attribute Editor' dialog box shows the configuration for a field. The 'Attribute' tab is selected, and the 'Value' field is set to 'PIPING-FEILDS'.

Tag	Prompt	Value
DWG_NO	Drawing Number	PIPING-FEILDS
NAME	Drawn By	
DATE	Date	
SCALE	Scale	AS NOTED
NO	Revision Number	

The 'Field' dialog box shows the configuration for the 'Filename' field. The 'Field category' is set to 'Document'. The 'Field names' list includes 'Filename', which is selected. The 'Format' is set to 'Uppercase'. The 'Field expression' is set to '%<\AcVar Filename \f "%tc1%fn2">%'. The 'Display file extension' checkbox is checked.

Below the dialog boxes, a portion of a title block table is visible:

ORD	DATE	
		JOB NO.
		DRAWING NO.
AS NOTED		PIPING-FEILDS

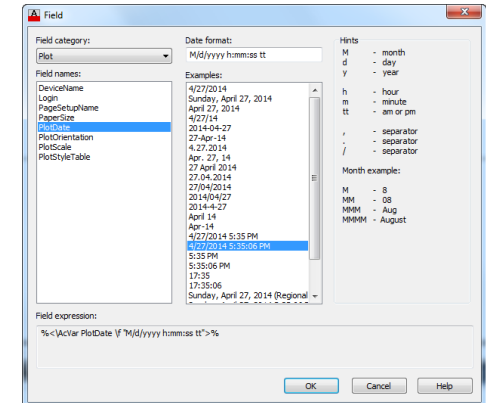
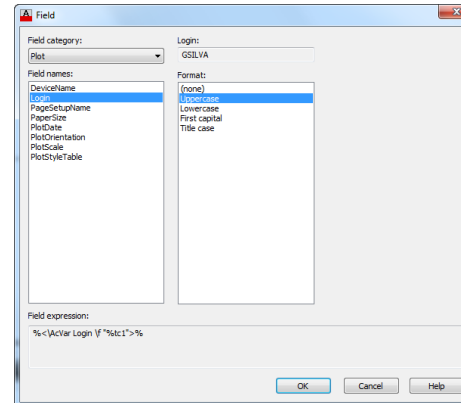
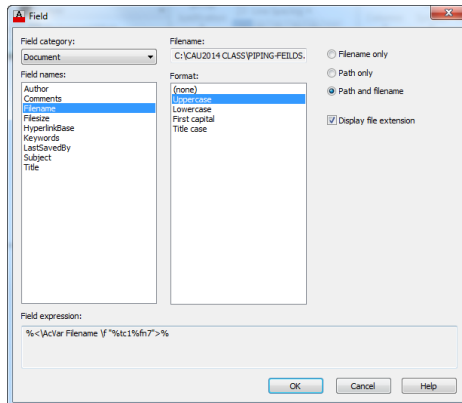
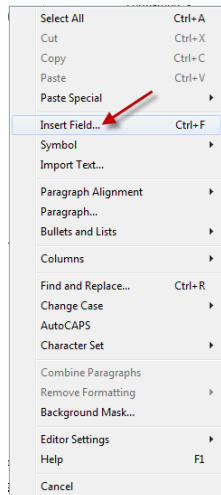
AutoCAD commands and features.



Fields.

Create plot stamps to keep track of your drawing location and when they were plotted.

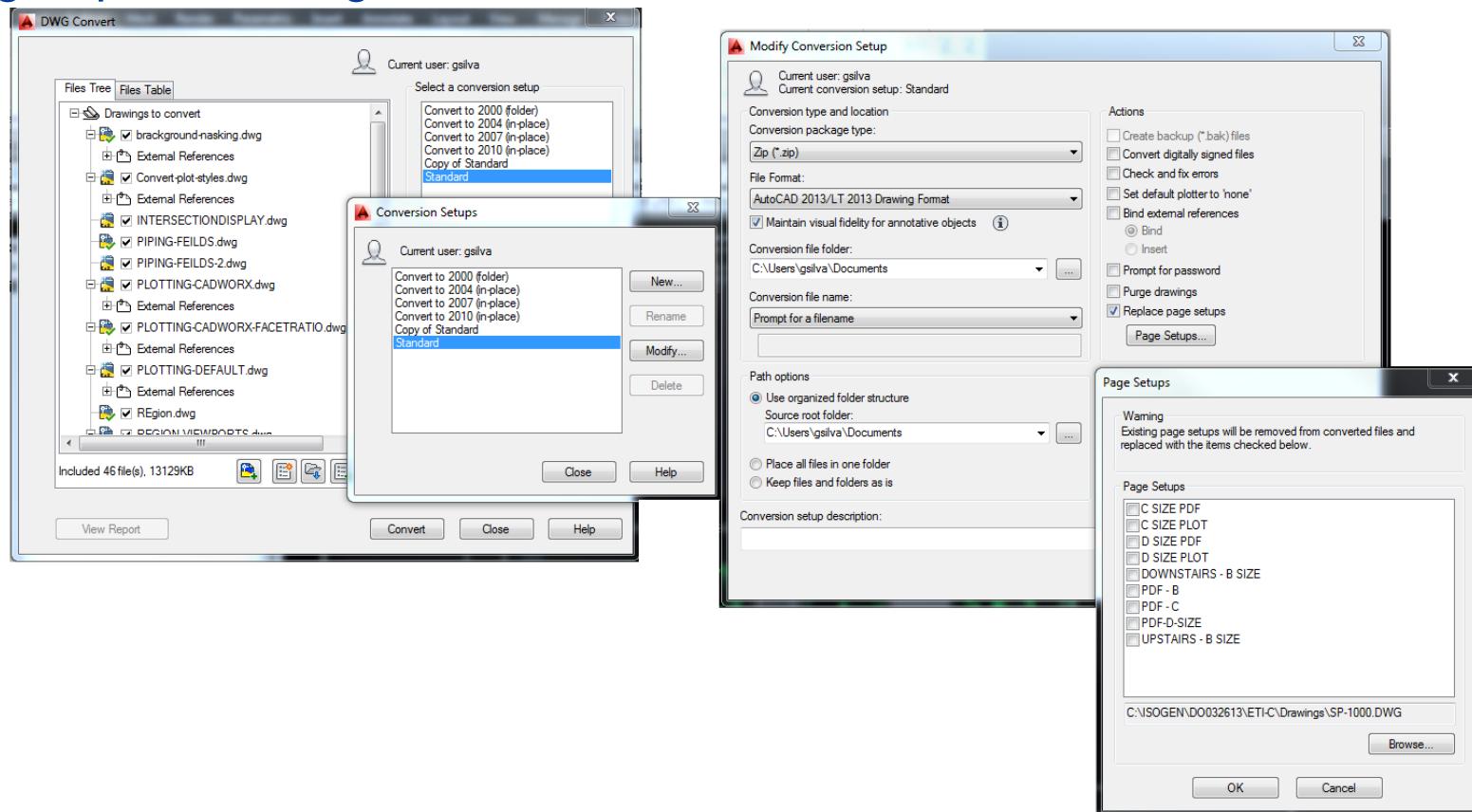
FILE: C:\CAU2014 CLASS\PIPING-FIELDS.DWG PLOTTED BY: GSILVA ON 4/27/2014 5:28:30 PM



AutoCAD commands and features.



DWGCONVERT : use this command to add your standard plot style to a group of drawings.

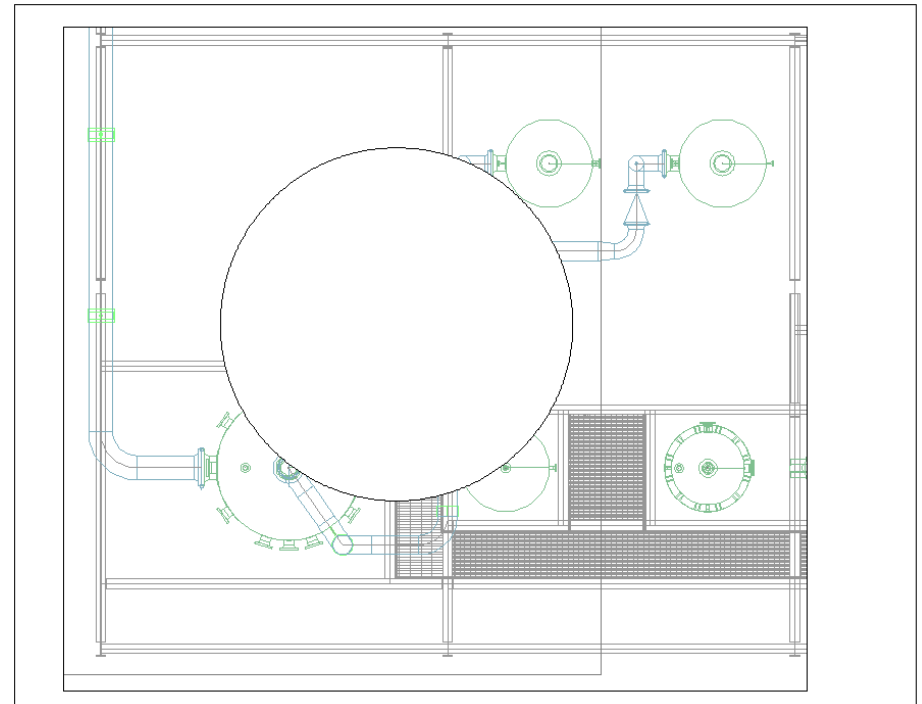
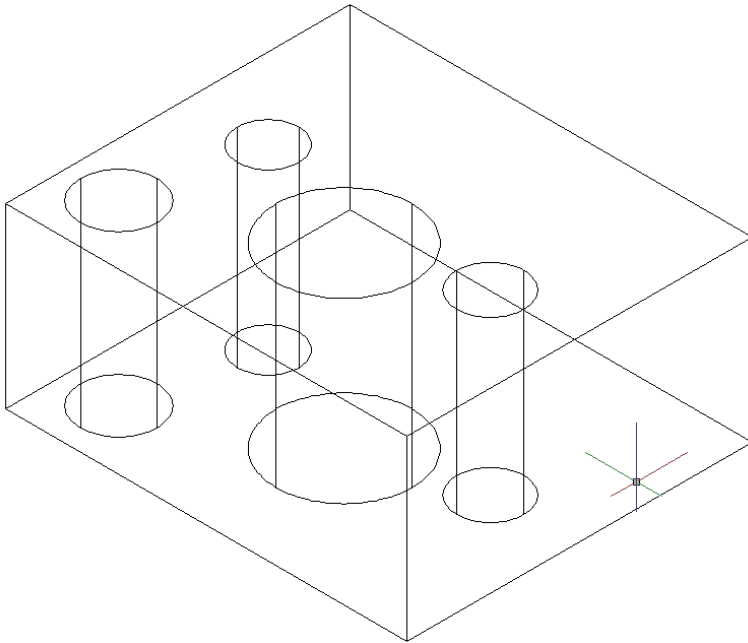


AutoCAD commands and features.



Regions.

Use regions to help in the aid of unique viewport creation and also when creating 3D solids.

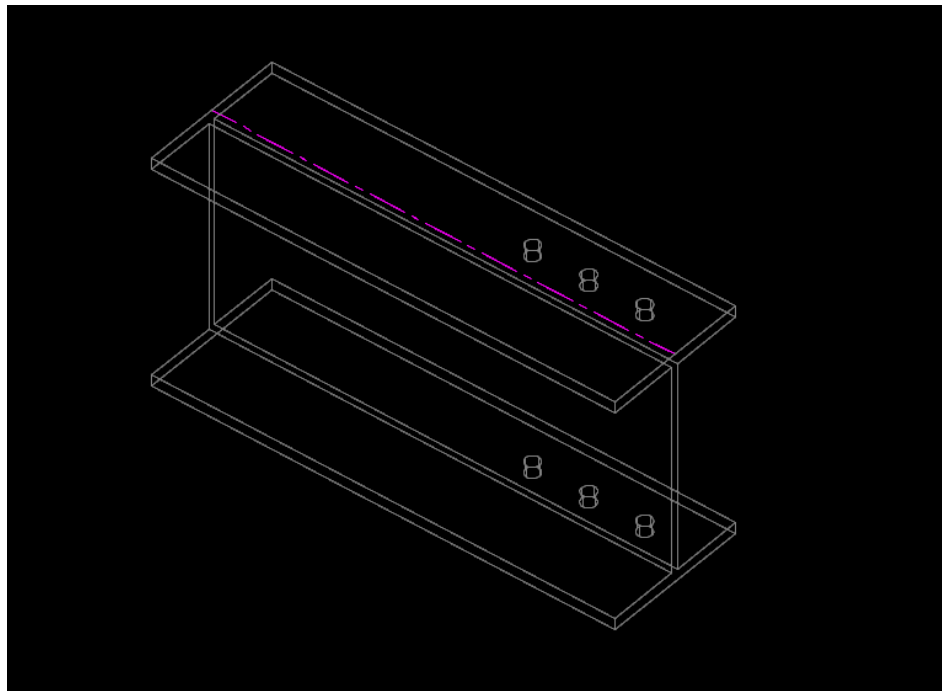


AutoCAD commands and features.



Solid Editing Tools

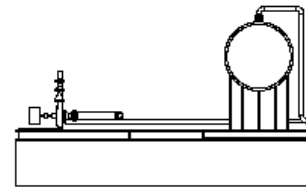
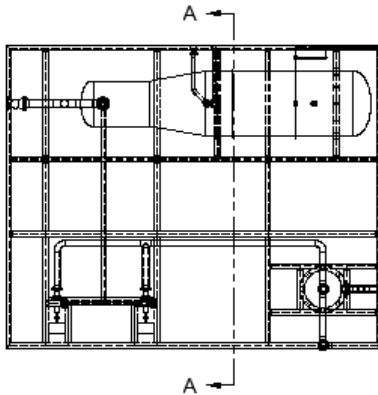
Learn each one of these tools.



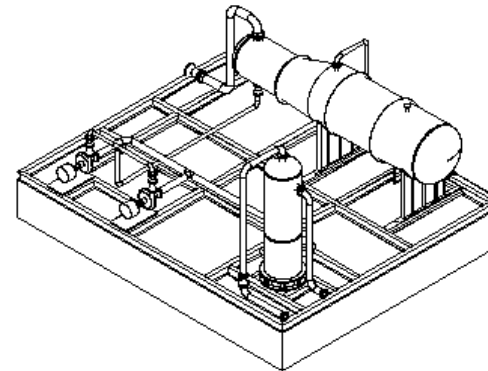
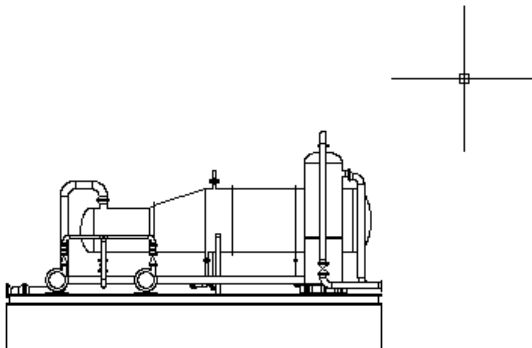
AutoCAD commands and features.



Viewbase command will help with small skid drawings.



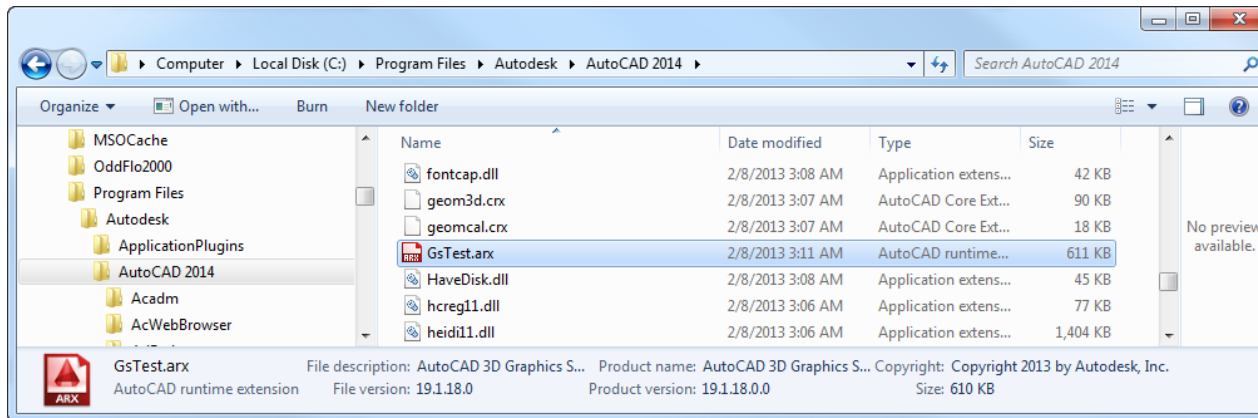
SECTION A-A
SCALE 1/128" = 1'-0"



Quick way to test machines and settings



- Gstest.arx located in AutoCAD root folder.



- Load it into your test model using APPLOAD.
- GSTESTBENCHMARK

```
Command: GSTESTBENCHMARK
-----
Wireframe      : 1806.986469 ms
Wireframe      : 100.720179 fps
Hidden Line    : 4362.031489 ms
Hidden Line    : 41.723679 fps
Flat Shaded    : 2761.974318 ms
Flat Shaded    : 65.894892 fps
Gouraud Shaded : 2819.252604 ms
Gouraud Shaded : 64.556117 fps
-----
```


Thank you for attending!!!



- Any questions?